

Amelia 2965



MODERN FARMHOUSE ENHANCED

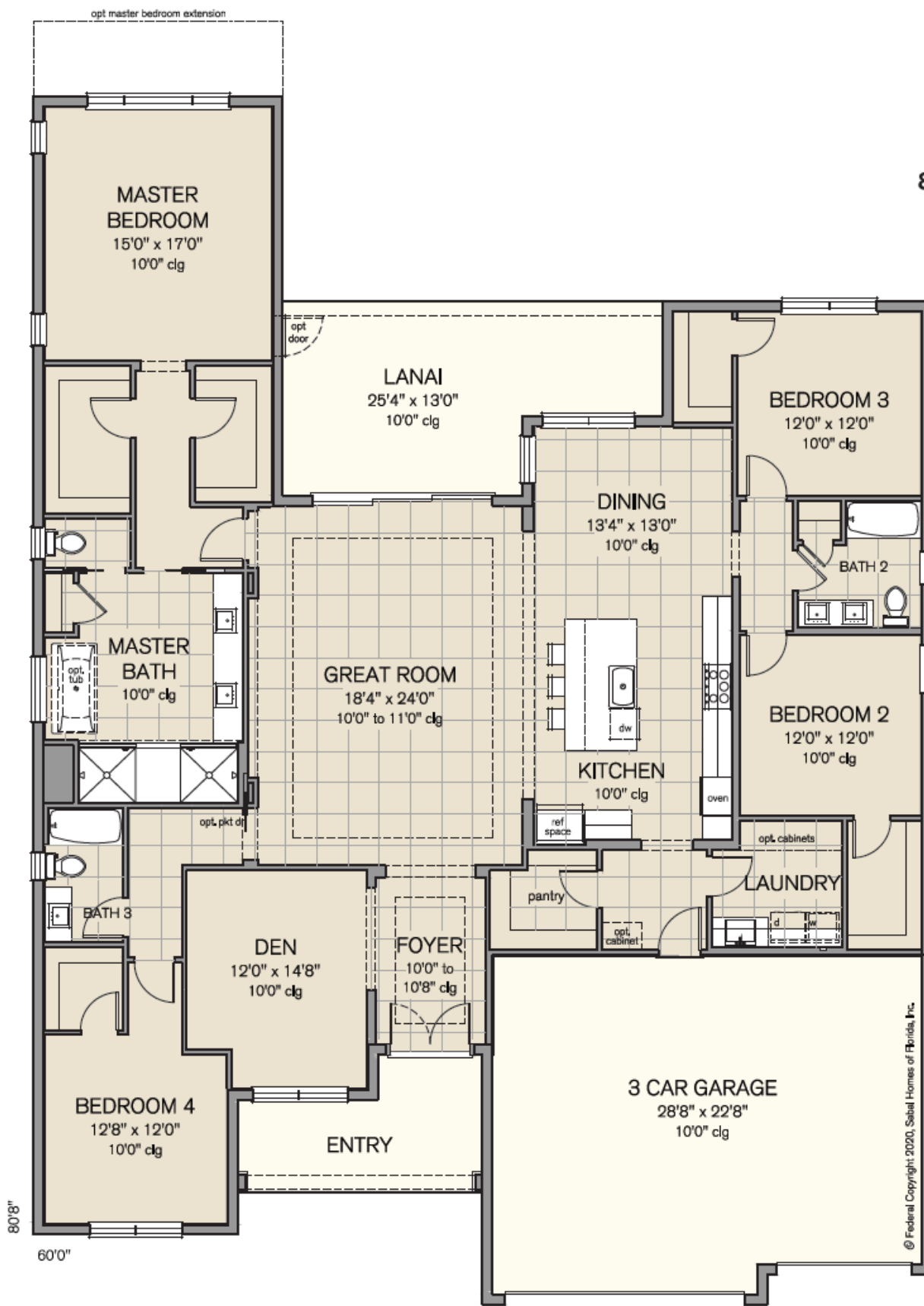
SABAL HOMES



MODERN FARMHOUSE



CRAFTSMAN



AMELIA 2965 FLOOR AREA

Living	2,965 S.F.
Garage	675 S.F.
Lanai	280 S.F.
Porch	120 S.F.
<b>TOTAL</b>	<b>4,040 S.F.</b>

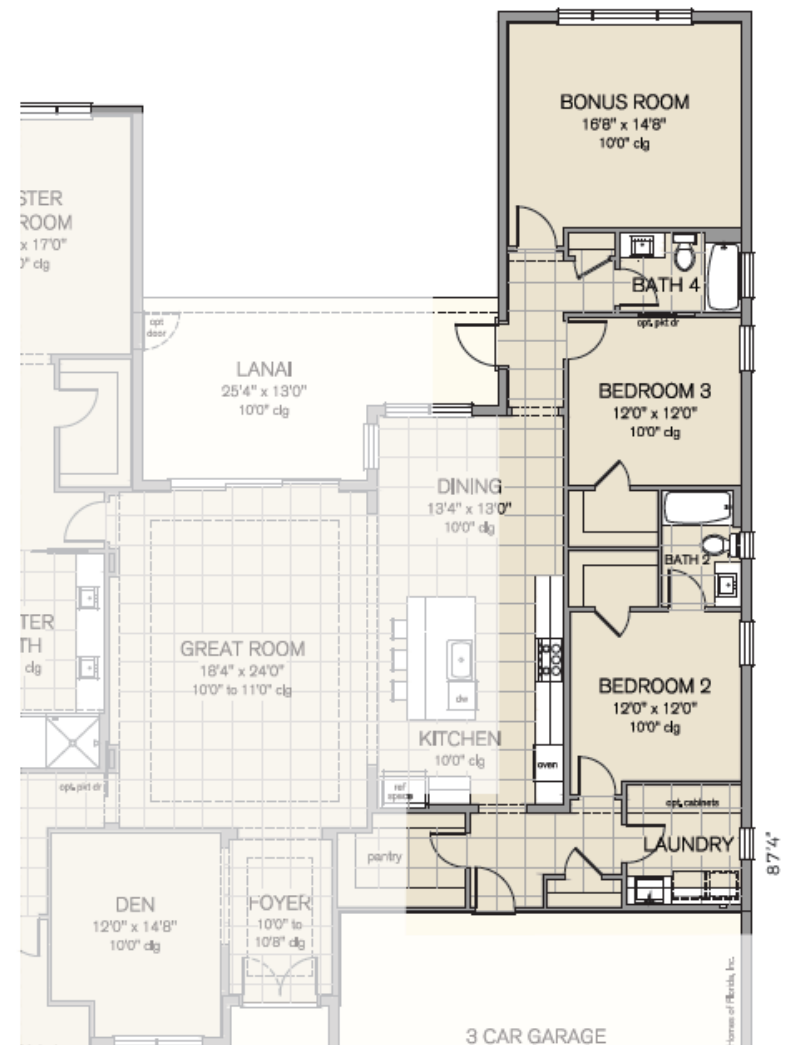
091220

AMELIA - Modern Farmhouse Floor Plan

TOTAL LIVING: 2,965 S.F.



AMELIA - Modern Farmhouse Next Generation Suite in lieu of Den  
TOTAL LIVING: 2,965 S.F.



091220

AMELIA - Modern Farmhouse Includes Bonus Room, Bath 4  
TOTAL LIVING: 3,300 S.F.



*Premier Luxury Living Since 1976*

813.655.7475 | [info@SabalHomesFL.com](mailto:info@SabalHomesFL.com) | [SabalHomesFL.com](http://SabalHomesFL.com)

**Sabal Homes of Florida**



Model photography or artist's conceptual renderings and floor plans are shown. These are not intended to be accurate representations and may be subject to change without notice. Floor plans, prices, specifications, incentives and promotions where applicable, may differ per plan and per community and may be subject to change without notice. Broker participation welcome. Broker commissions will be paid in accordance with Sabal Homes Broker Participation Policy. Transactional fees (including any incentives) must be written in the Sabal Homes for Sale and Purchase agreement and transaction must close. All rights reserved. Not an offer to purchase where prohibited by law. Equal Housing Opportunity Builder CGC061658. Please confirm with a Sabal Homes representative for current details. Updated 091220