

AMELIA 3330



MODERN FARMHOUSE ENHANCED

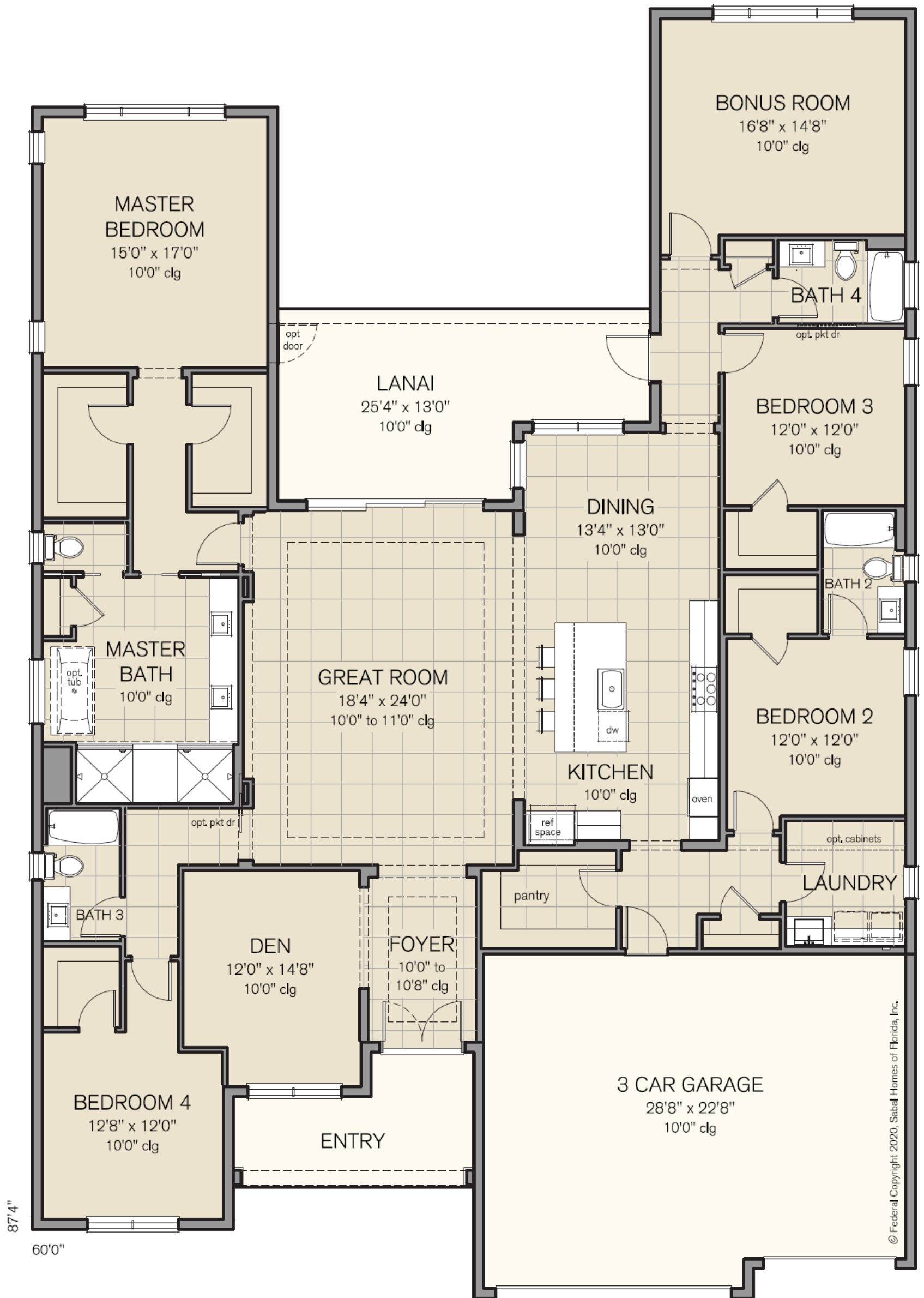
SABAL HOMES



MODERN FARMHOUSE



CRAFTSMAN



AMELIA 3330 FLOOR AREA

| | |
|--------------|-------------------|
| Living | 3,330 S.F. |
| Garage | 675 S.F. |
| Lanai | 280 S.F. |
| Porch | 120 S.F. |
| TOTAL | 4,405 S.F. |

© Federal Copyright 2020, Sabal Homes of Florida, Inc.