



MEDITERRANEAN

SABAL HOMES



TRADITIONAL



TUSCAN

# TRADEWINDS



813.655.7475 | sabalhomesfl.com



## FIRST FLOOR



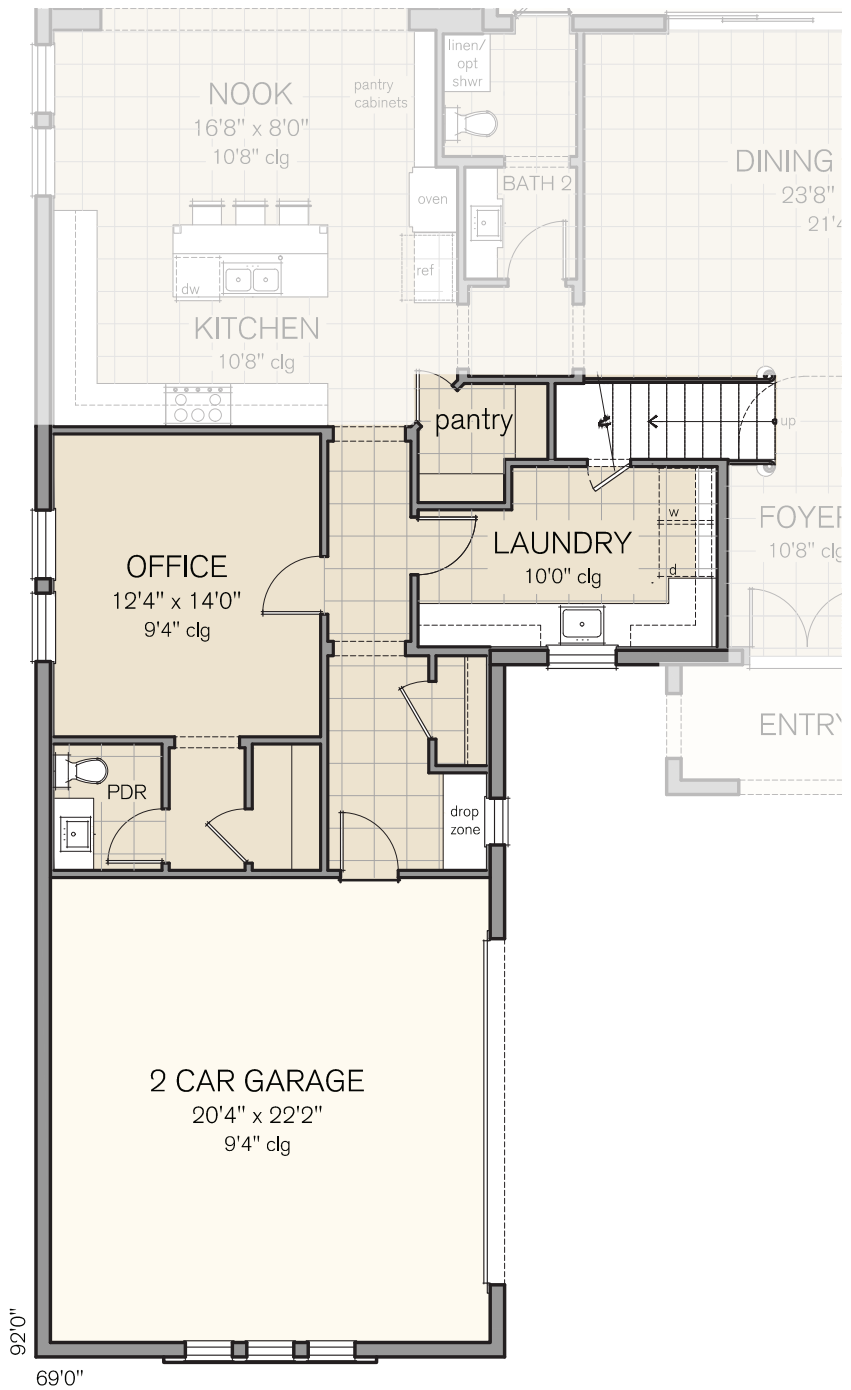
## SECOND FLOOR

### TRADEWINDS FLOOR AREA

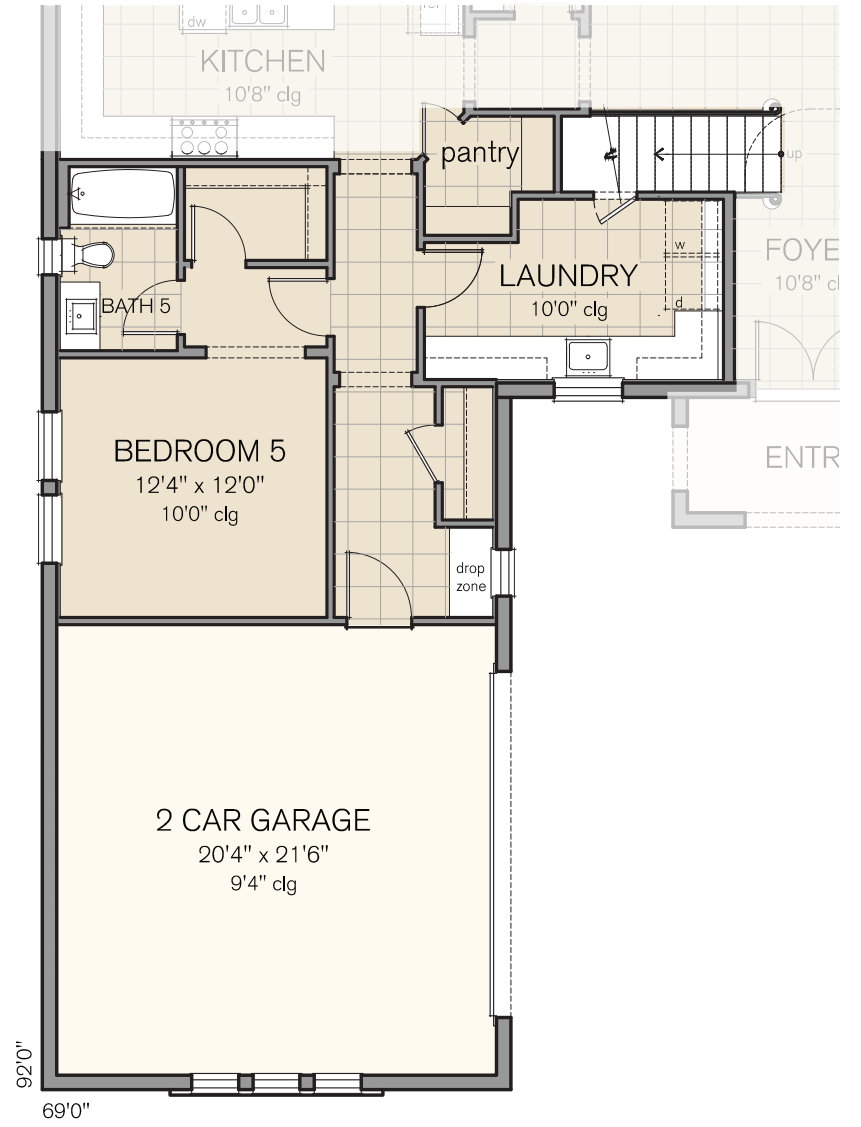
Total Living	4,190 S.F.
First Floor	2,735 S.F.
Second Floor	1,455 S.F.
Garage 1	660 S.F.
Garage 2	322 S.F.
Lanai	731 S.F.
Entry	78 S.F.
<b>TOTAL</b>	<b>5,981 S.F.</b>

022019

# OPTIONS



**TRADEWINDS - Office, Powder Bath**  
 Living + 225, TOTAL LIVING: 4,415 S.F.

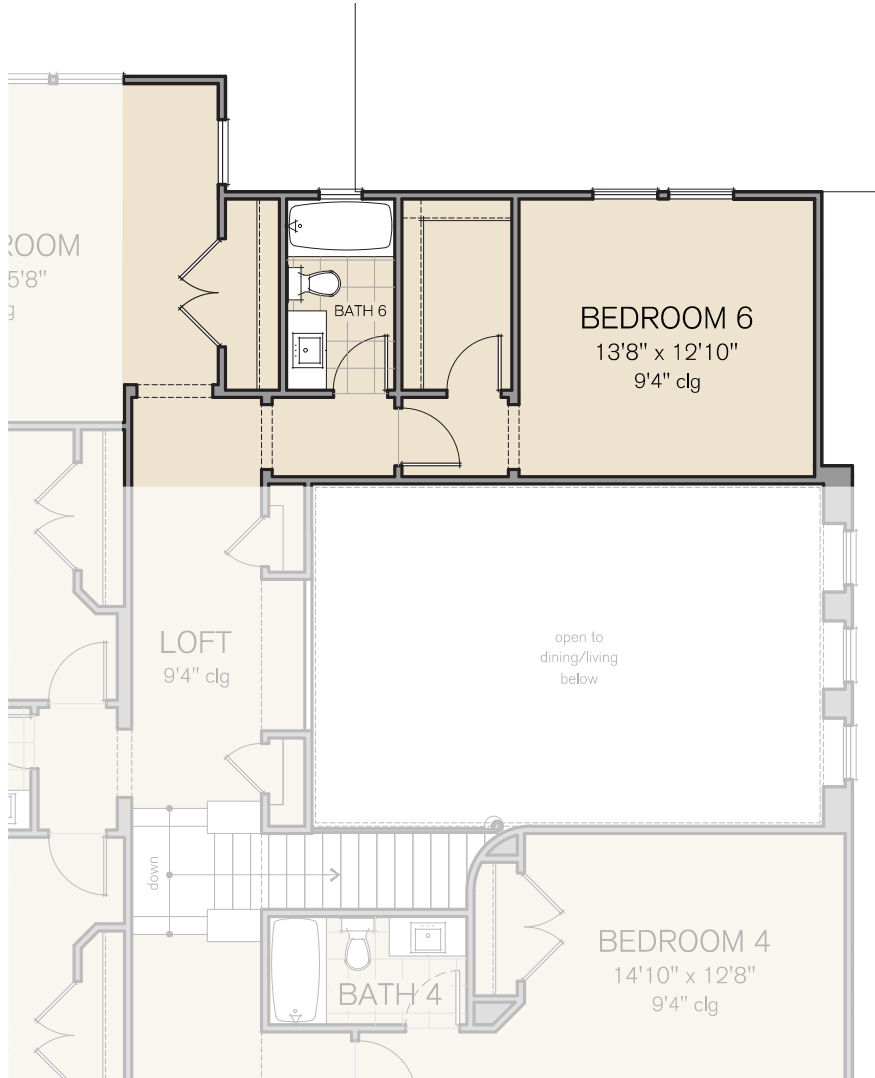


**TRADEWINDS - Bedroom 5, Bath 5**  
 Living: + 240, TOTAL LIVING: 4,430 S.F.

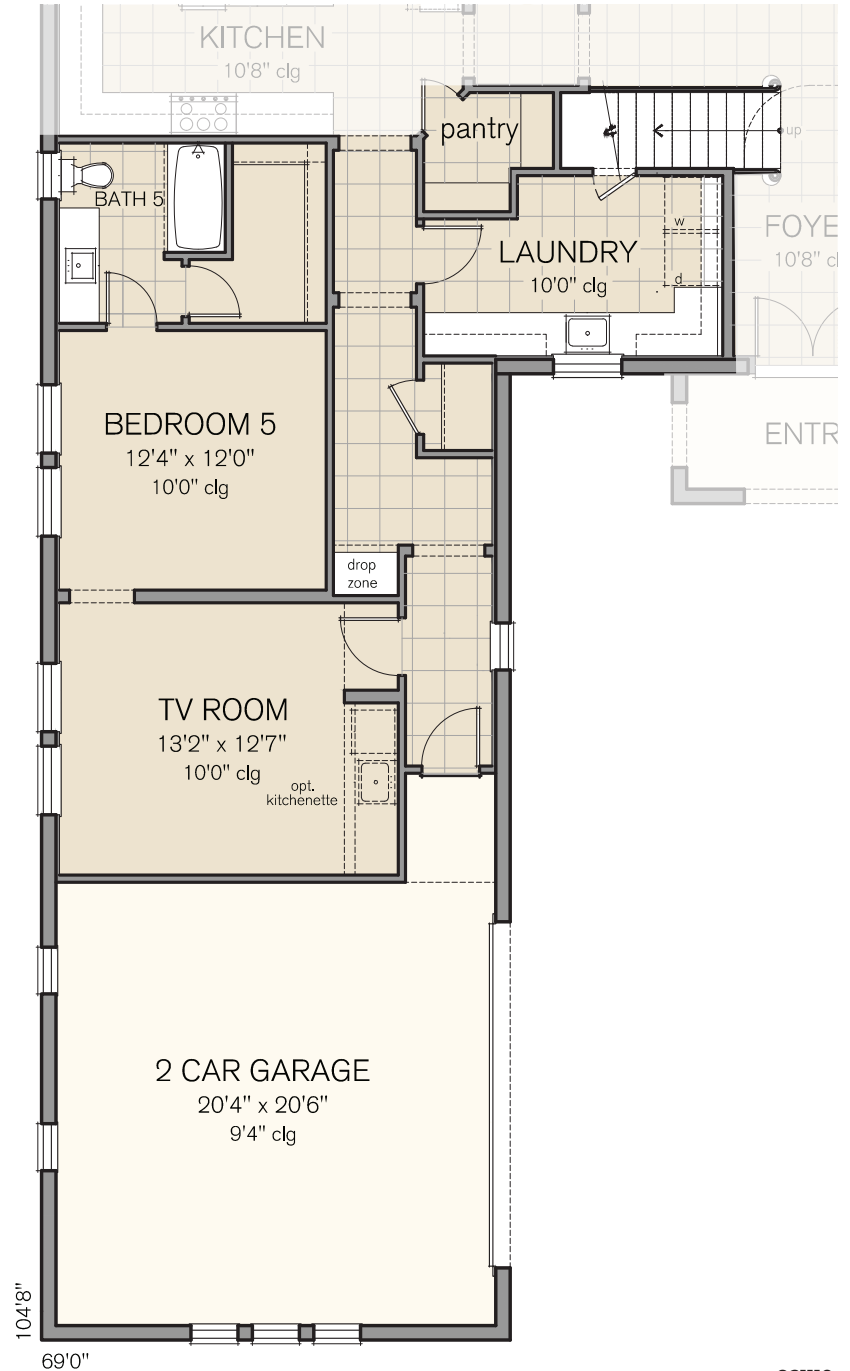
# OPTIONS



813.655.7475 | [sabalhomesfl.com](http://sabalhomesfl.com)



**TRADEWINDS - Bedroom 6, Bath 6**  
 Living: + 370, TOTAL LIVING: 4,560 S.F.



**TRADEWINDS - In-Law Suite, TV Room**  
 Living: + 495, TOTAL LIVING: 4,685 S.F.

021119





*Premier Luxury Living Since 1976*

813.655.7475 | [info@SabalHomesFL.com](mailto:info@SabalHomesFL.com) | [SabalHomesFL.com](http://SabalHomesFL.com)

**Sabal Homes of Florida**  
**15310 FishHawk Preserve Drive, Lithia, FL 33547**



Model photography or artist's conceptual renderings and floor plans are shown. These are not intended to be accurate representations and may be subject to change without notice. Floor plans, prices, specifications, incentives and promotions where applicable, may differ per plan and per community and may be subject to change without notice. Broker participation welcome. Broker commissions will be paid in accordance with Sabal Homes Broker Participation Policy. Transactional fees (including any incentives) must be written in the Sabal Homes for Sale and Purchase agreement and transaction must close. All rights reserved. Not an offer to purchase where prohibited by law. Equal Housing Opportunity Builder CGC061658. Please confirm with a Sabal Homes representative for current details. Updated 020619