



ITALIAN

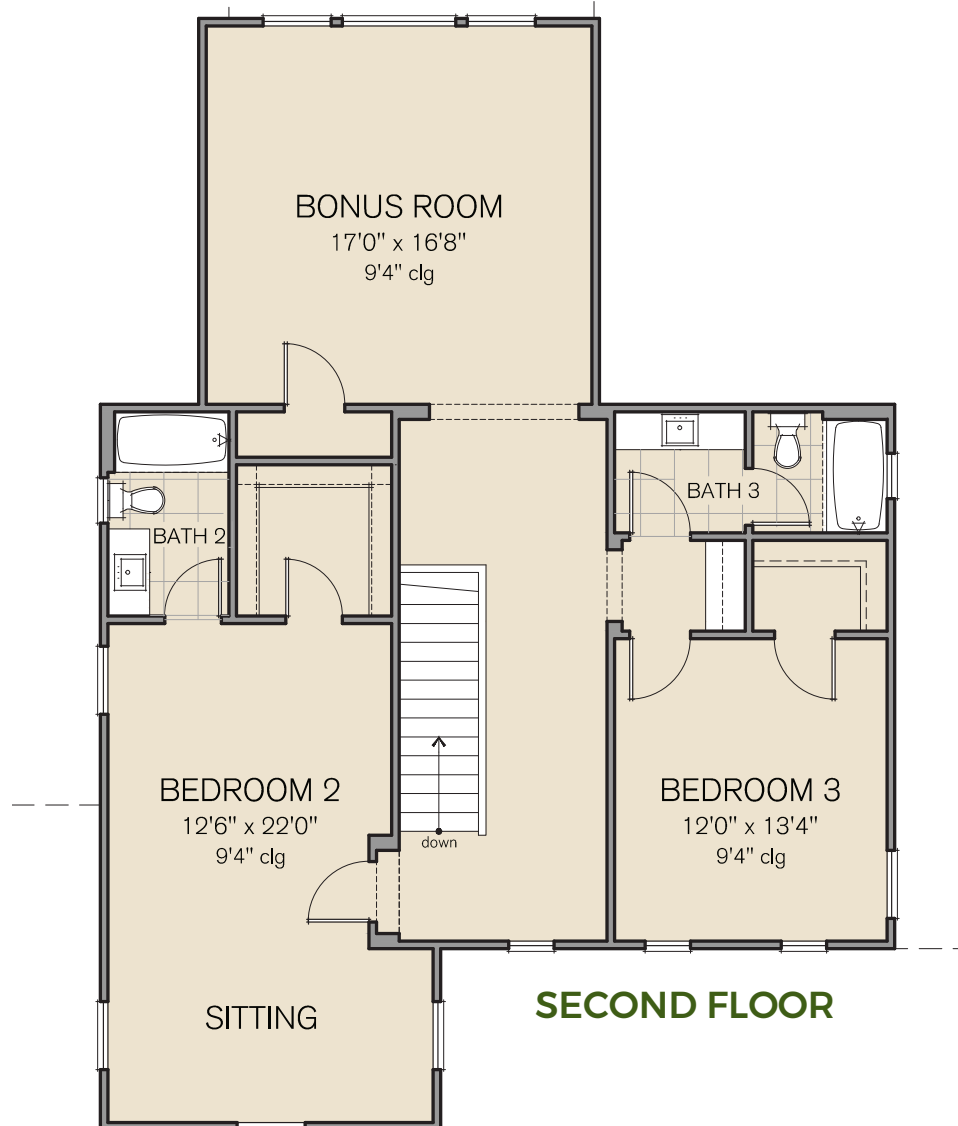
SABAL HOMES



TRADITIONAL



MEDITERRANEAN



GULFVIEW FLOOR AREA

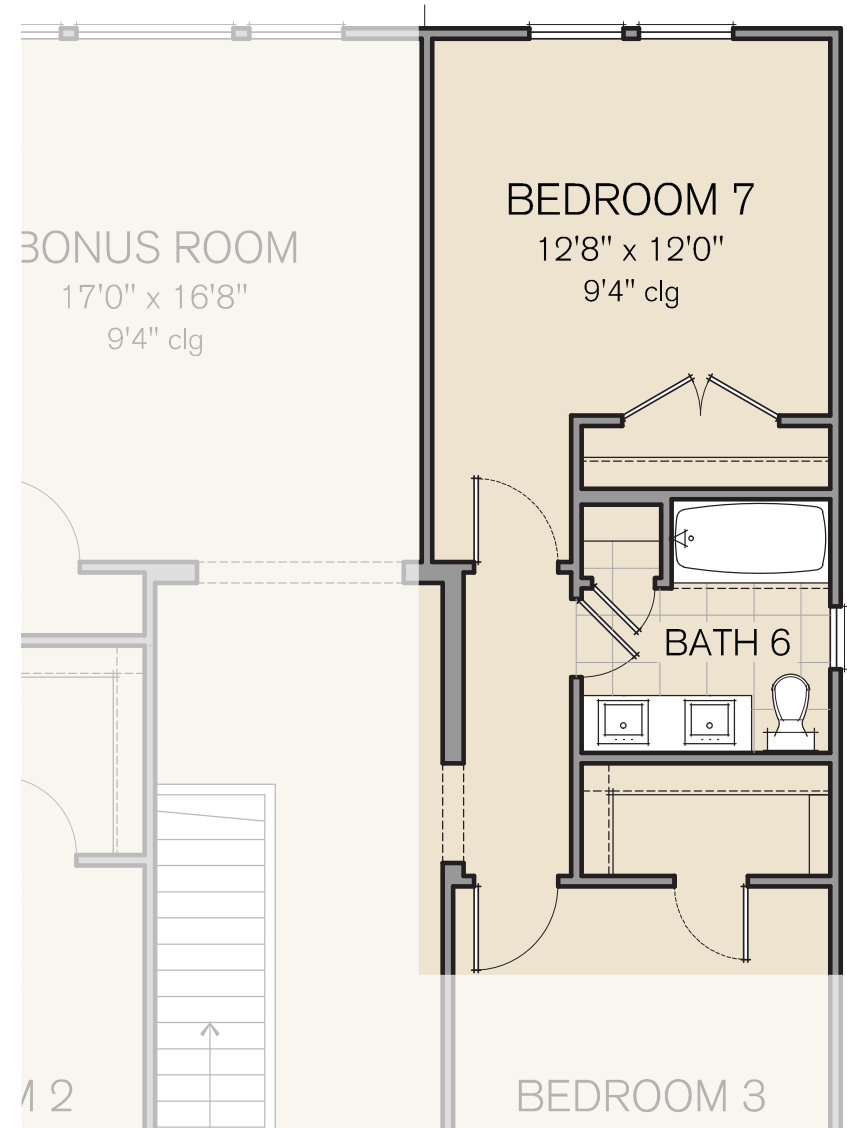
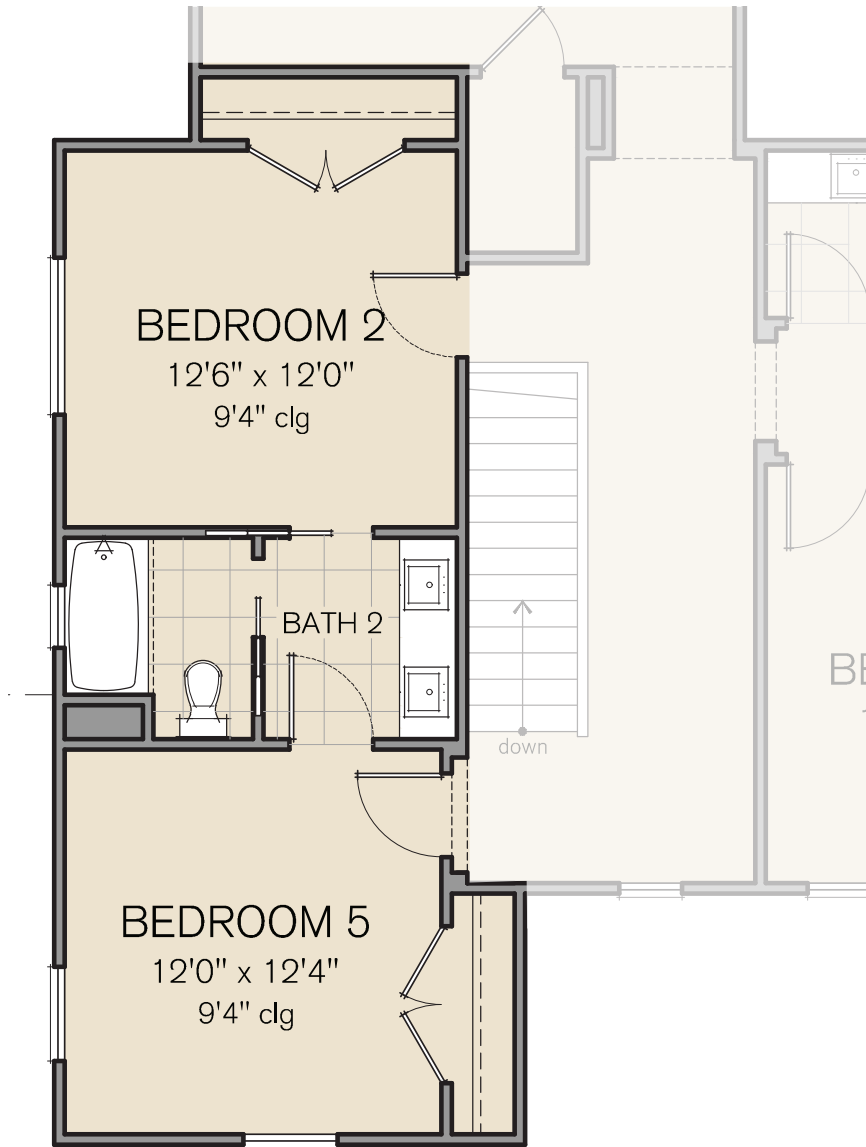
Total Living	4,132 S.F.
First Floor	2,912 S.F.
Second Floor	1,220 S.F.
3 Car Garage	743 S.F.
Lanai	425 S.F.
Entry	135 S.F.
TOTAL	5,435 S.F.

OPTIONS



SABAL HOMES

813.655.7475 | sabalhomesfl.com



021019

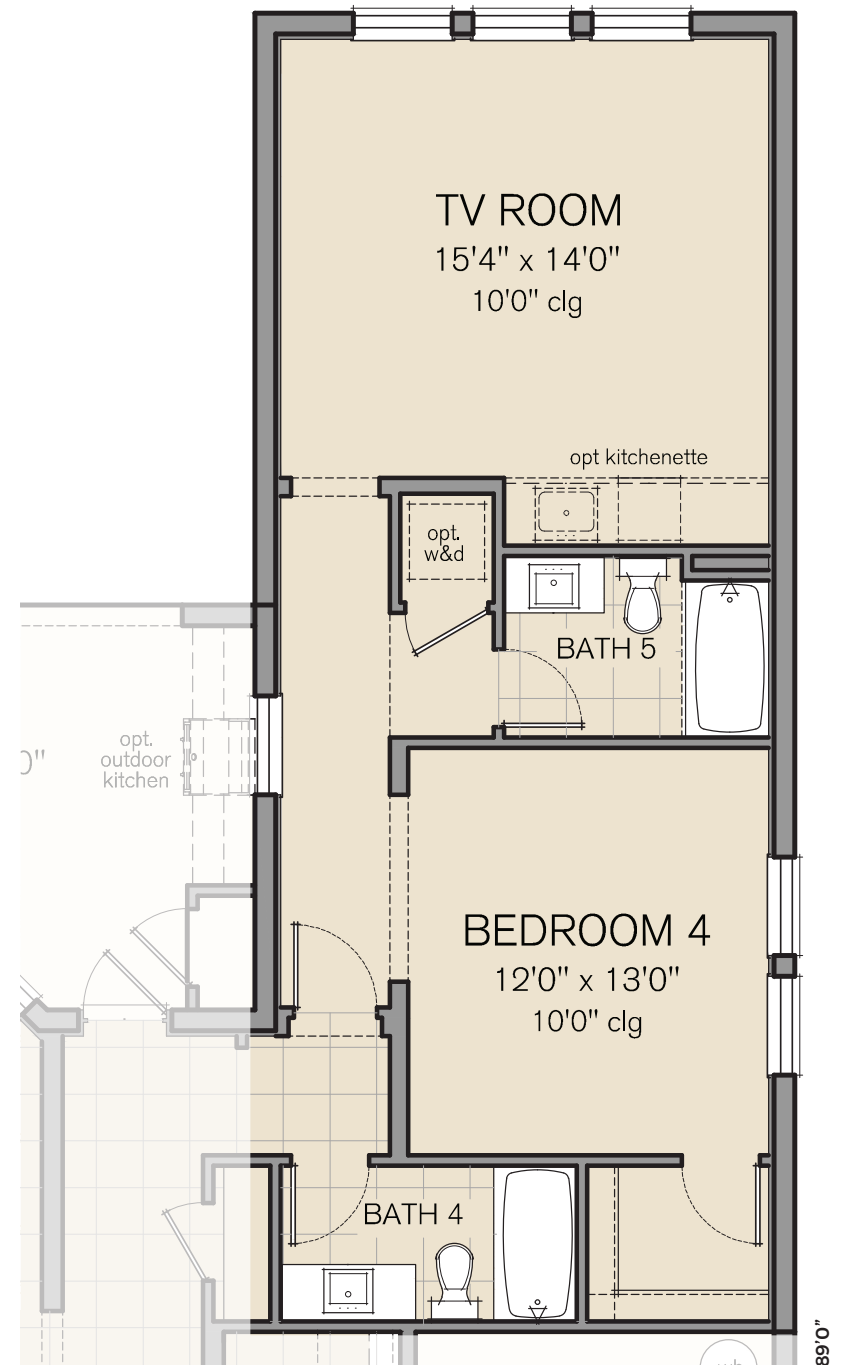
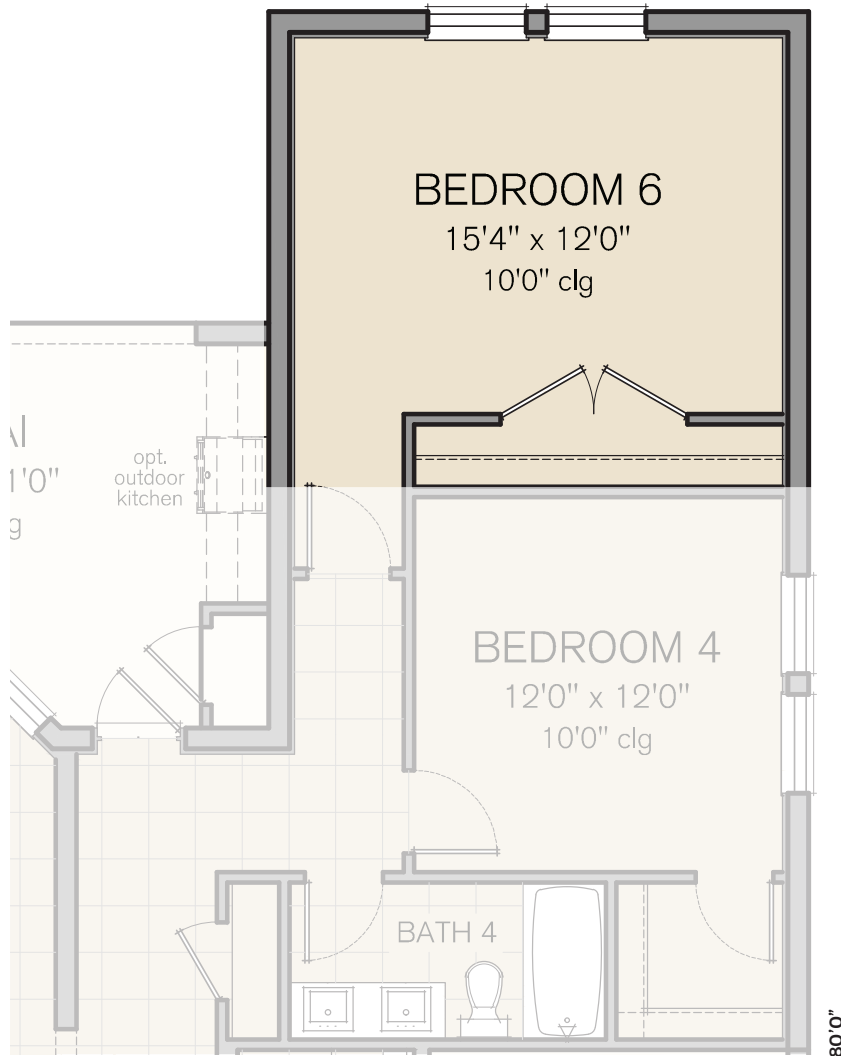
GULFVIEW - Bedroom 5 (upper)
TOTAL LIVING: 4,132 S.F.

GULFVIEW - Bedroom 7 (upper)
Living: + 221, TOTAL LIVING: 4,353 S.F.

OPTIONS



813.655.7475 | sabalhomesfl.com



GULFVIEW - Bedroom 6 (lower)
Living: + 248, TOTAL LIVING: 4,380 S.F.

GULFVIEW - In-Law Suite with TV Room
Living: + 405, TOTAL LIVING: 4,537 S.F.



Premier Luxury Living Since 1976

813.655.7475 | info@SabalHomesFL.com | SabalHomesFL.com

Sabal Homes of Florida
15310 FishHawk Preserve Drive, Lithia, FL 33547



Model photography or artist's conceptual renderings and floor plans are shown. These are not intended to be accurate representations and may be subject to change without notice. Floor plans, prices, specifications, incentives and promotions where applicable, may differ per plan and per community and may be subject to change without notice. Broker participation welcome. Broker commissions will be paid in accordance with Sabal Homes Broker Participation Policy. Transactional fees (including any incentives) must be written in the Sabal Homes for Sale and Purchase agreement and transaction must close. All rights reserved. Not an offer to purchase where prohibited by law. Equal Housing Opportunity Builder CGC061658. Please confirm with a Sabal Homes representative for current details. Updated 020619