



MEDITERRANEAN

SABAL HOMES



CRAFTSMAN



MODERN TUSCAN

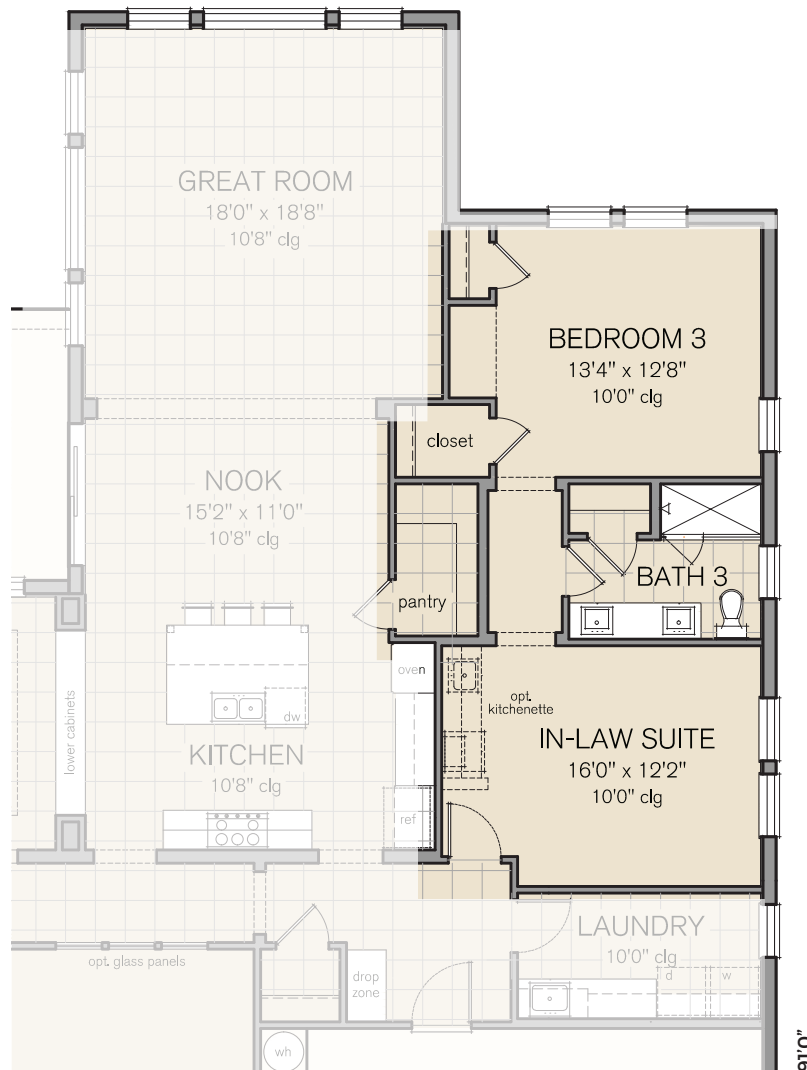


**CAYMAN FLOOR AREA**

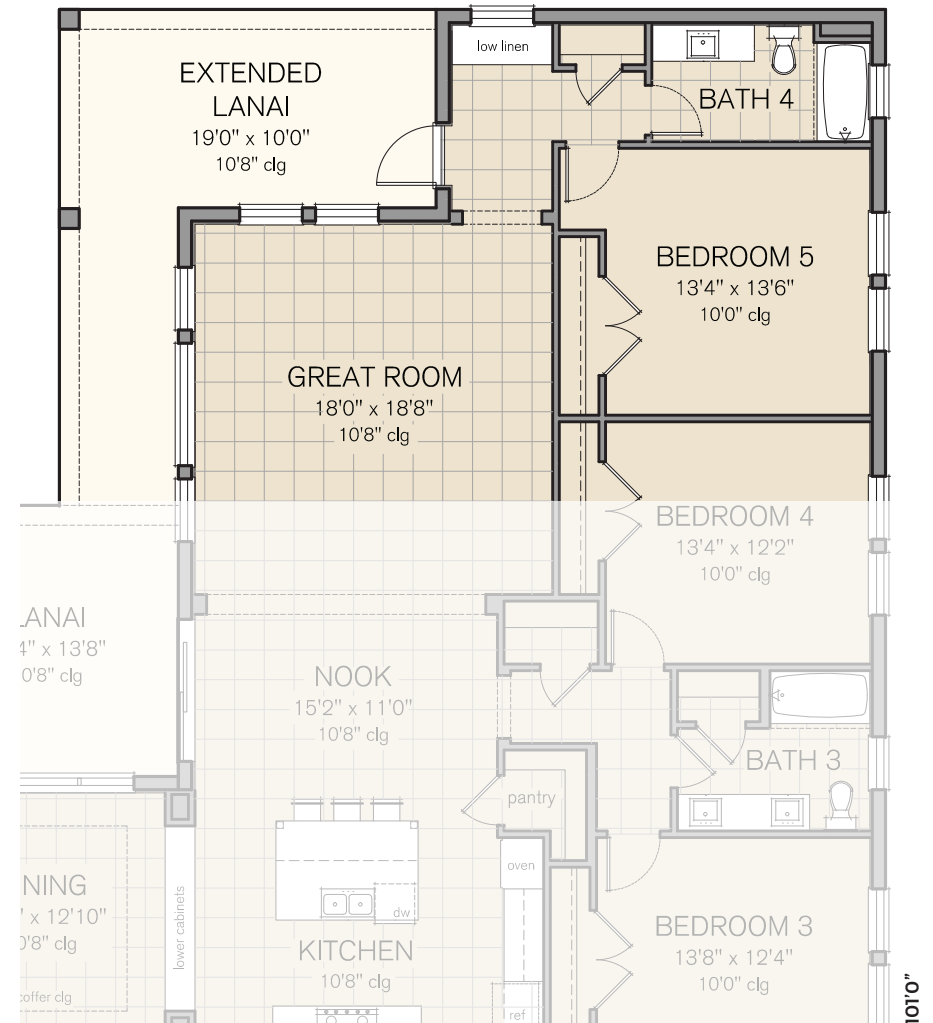
Living	3,380 S.F.
Garage 1	523 S.F.
Garage 2	268 S.F.
Lanai	354 S.F.
Entry	210 S.F.
<b>TOTAL</b>	<b>4,735 S.F.</b>

© Federal Copyright 2019, Sabal Homes of Florida, Inc.

# OPTIONS



9'10"



10'10"

**CAYMAN - In-Law Suite**  
TOTAL LIVING: 3,380 S.F.

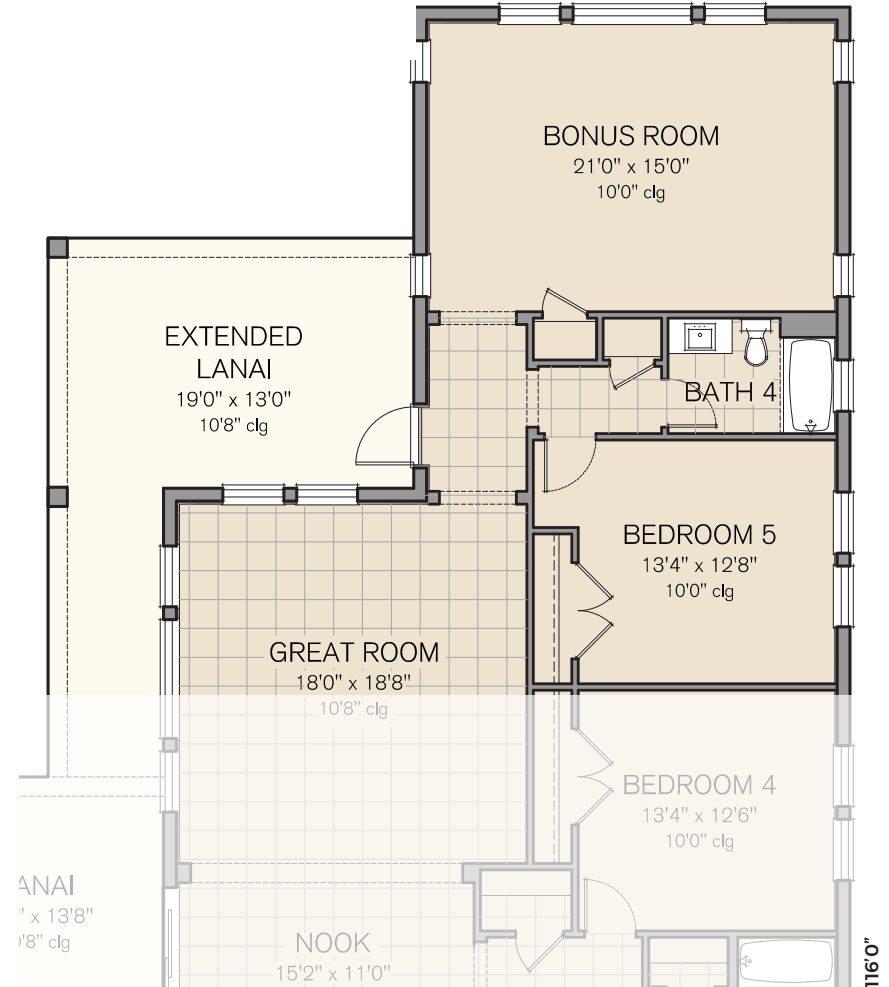
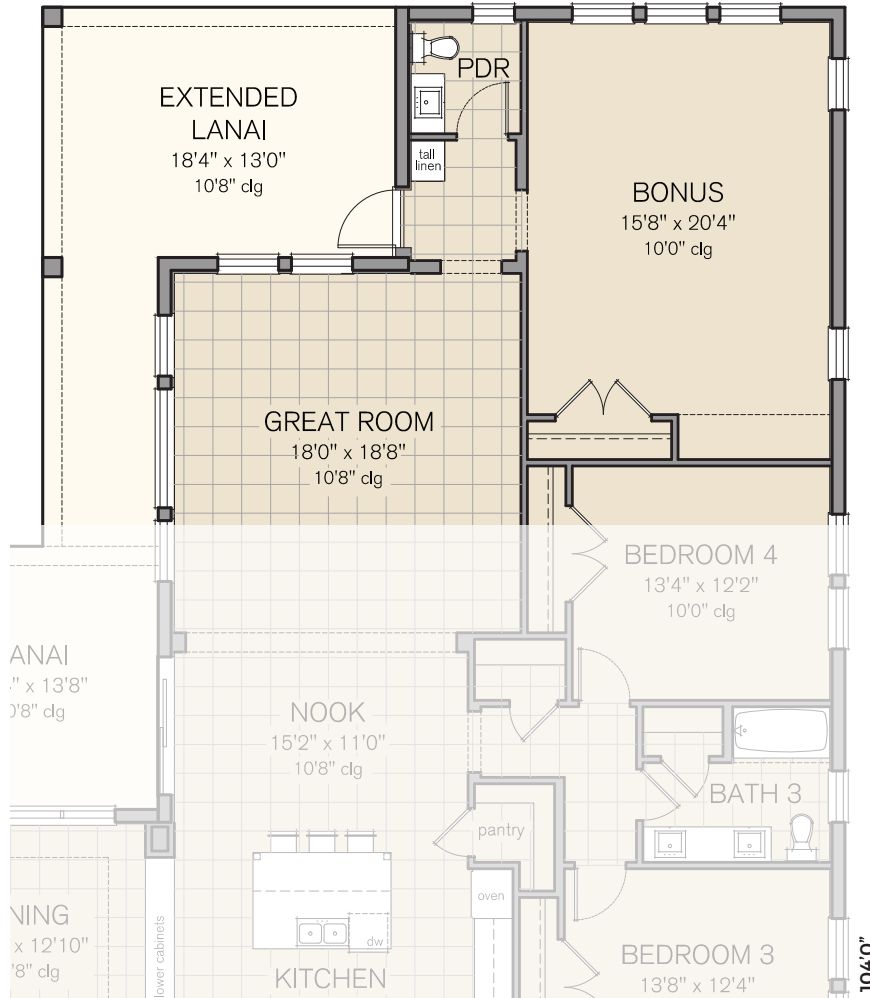
**CAYMAN - Bedroom 5, Bath 4**  
Living: + 385, TOTAL LIVING: 3,765 S.F.



# SABAL HOMES

813.655.7475 | sabalhomesfl.com

## OPTIONS



020519

**CAYMAN - Bonus Room, Powder Bath**  
Living: + 460, TOTAL LIVING : 3,840 S.F.

**CAYMAN - Bedroom 5, Bonus Room, Bath 4**  
Living: + 725, TOTAL 4,105 S.F.





*Premier Luxury Living Since 1976*

813.655.7475 | [info@SabalHomesFL.com](mailto:info@SabalHomesFL.com) | [SabalHomesFL.com](http://SabalHomesFL.com)

**Sabal Homes of Florida**  
**15310 FishHawk Preserve Drive, Lithia, FL 33547**



Model photography or artist's conceptual renderings and floor plans are shown. These are not intended to be accurate representations and may be subject to change without notice. Floor plans, prices, specifications, incentives and promotions where applicable, may differ per plan and per community and may be subject to change without notice. Broker participation welcome. Broker commissions will be paid in accordance with Sabal Homes Broker Participation Policy. Transactional fees (including any incentives) must be written in the Sabal Homes for Sale and Purchase agreement and transaction must close. All rights reserved. Not an offer to purchase where prohibited by law. Equal Housing Opportunity Builder CGC061658. Please confirm with a Sabal Homes representative for current details. Updated 020619