

# TRADEWINDS IV

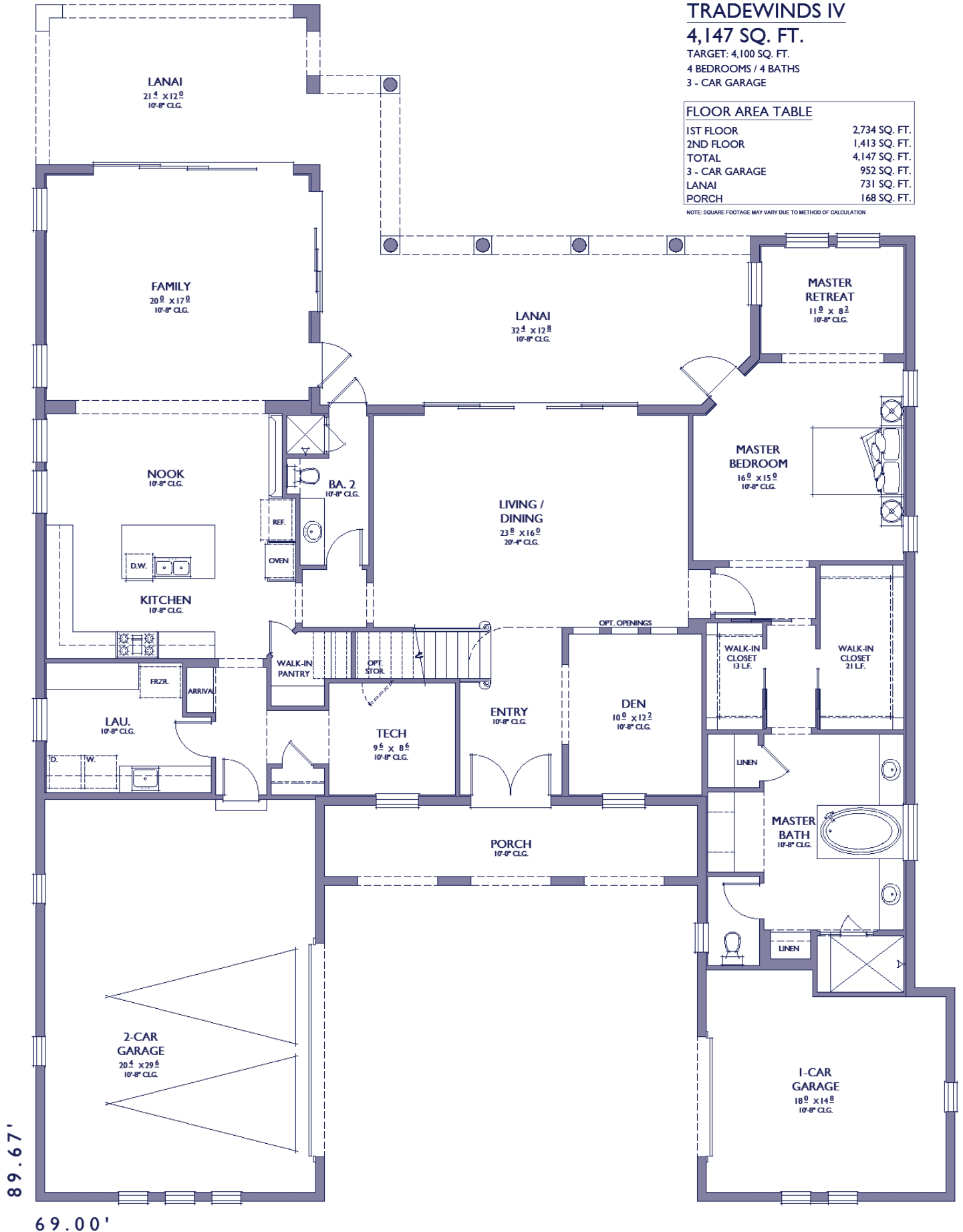
4,147 SQ. FT.

TARGET: 4,100 SQ. FT.  
4 BEDROOMS / 4 BATHS  
3 - CAR GARAGE

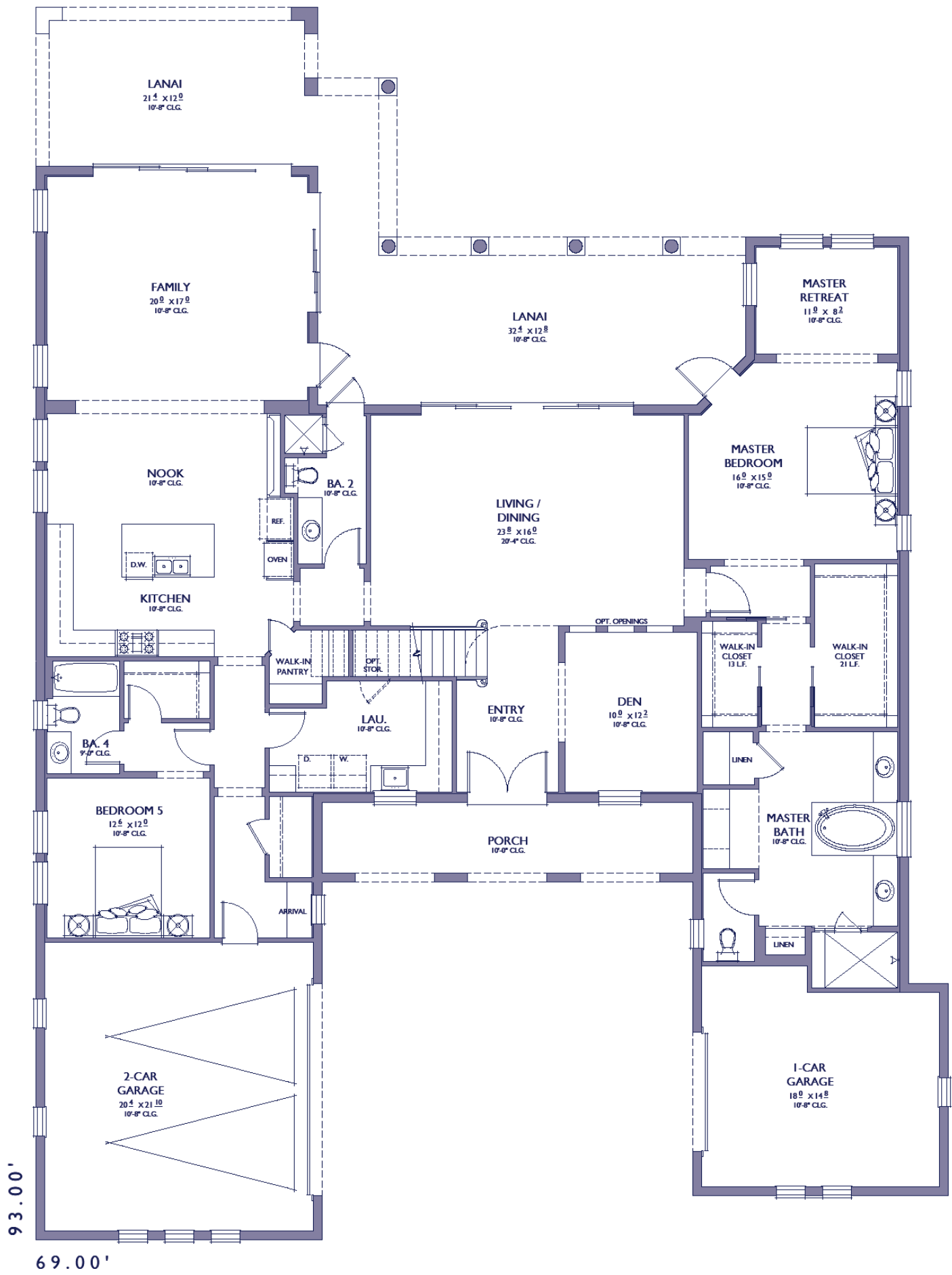
## FLOOR AREA TABLE

1ST FLOOR	2,734 SQ. FT.
2ND FLOOR	1,413 SQ. FT.
TOTAL	4,147 SQ. FT.
3 - CAR GARAGE	952 SQ. FT.
LANAI	731 SQ. FT.
PORCH	168 SQ. FT.

NOTE: SQUARE FOOTAGE MAY VARY DUE TO METHOD OF CALCULATION

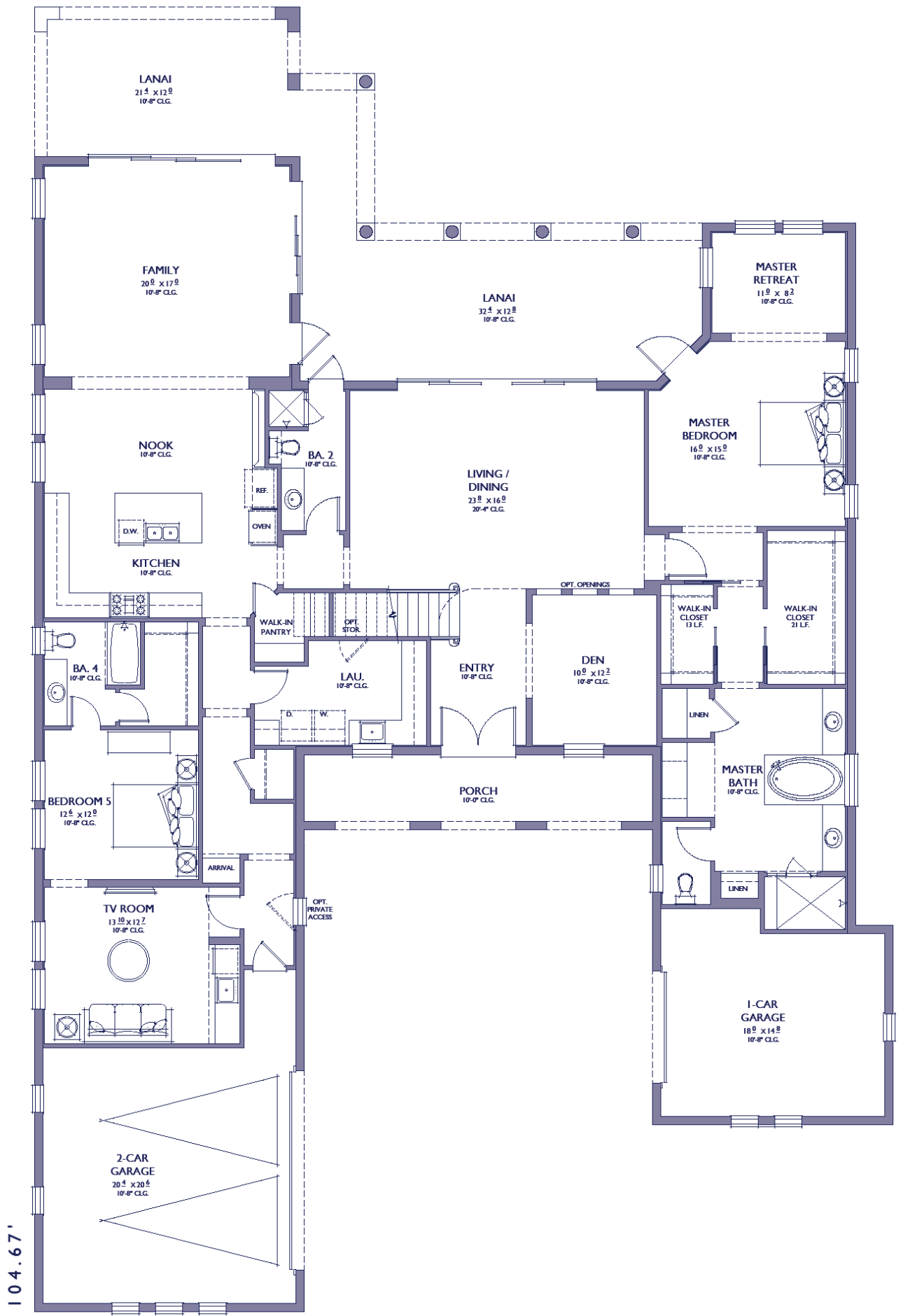












104.67'

69.00'

TRADEWINDS IV - OPT. IN-LAW SUITE

+488 SQ. FT. (TOTAL 4,635 SQ. FT.)