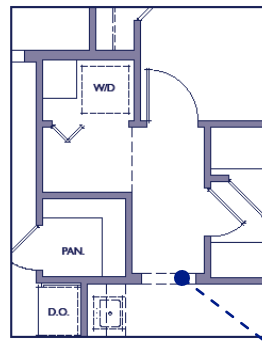
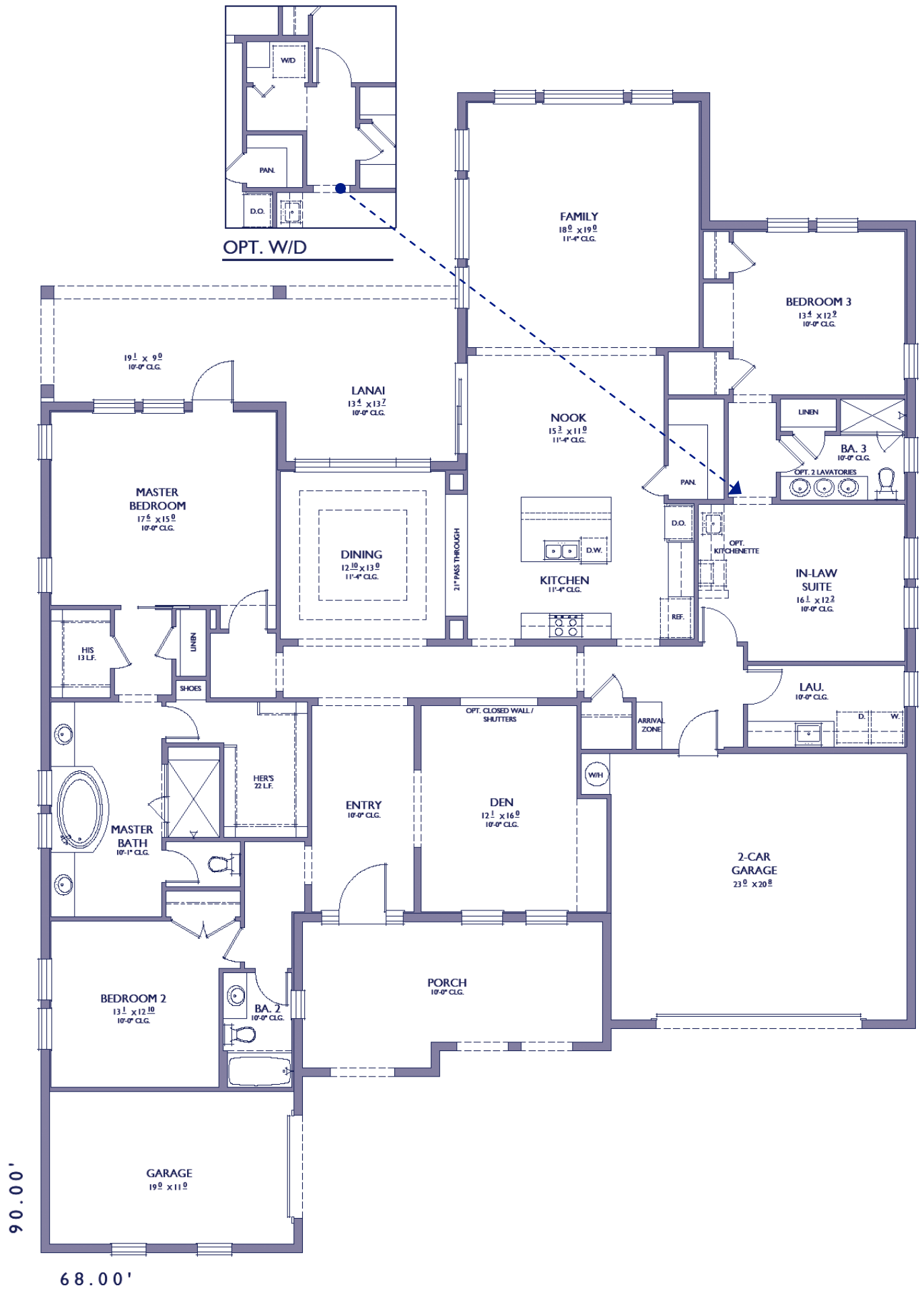
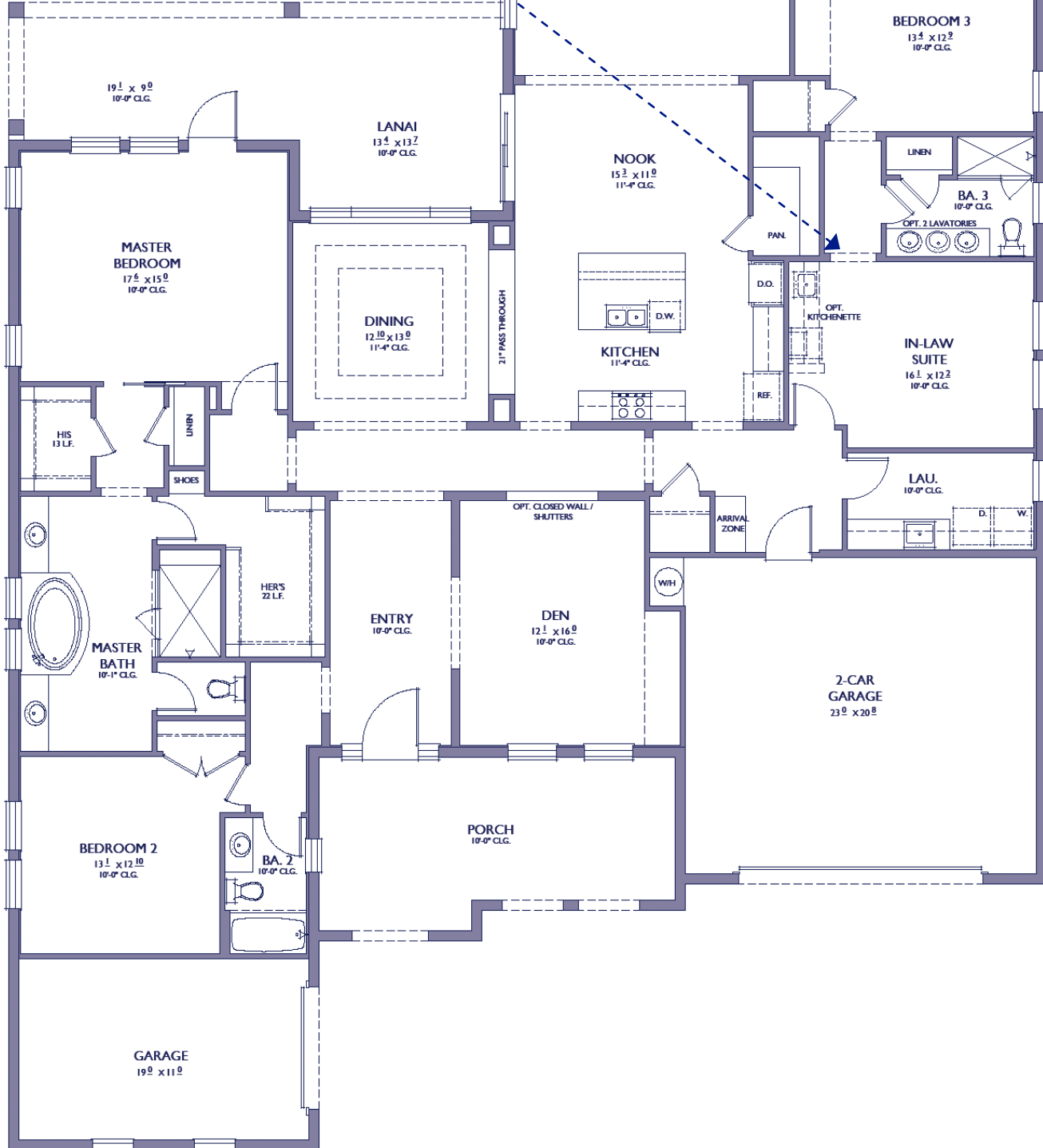


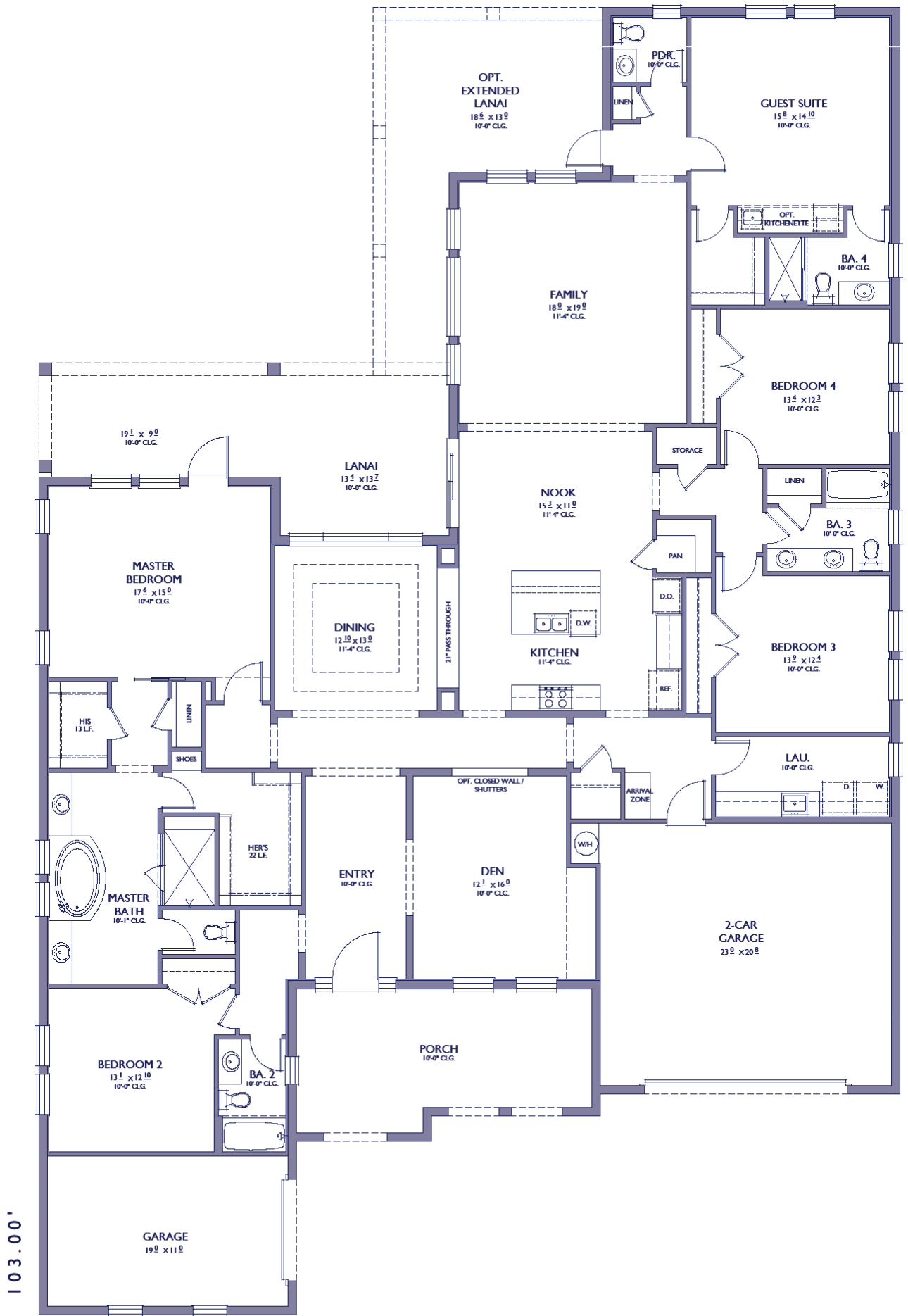
CAYMAN - STANDARD PLAN



OPT. W/D



CAYMAN - IN-LAW SUITE I **TOTAL LIVING: 3,320 S.F.**



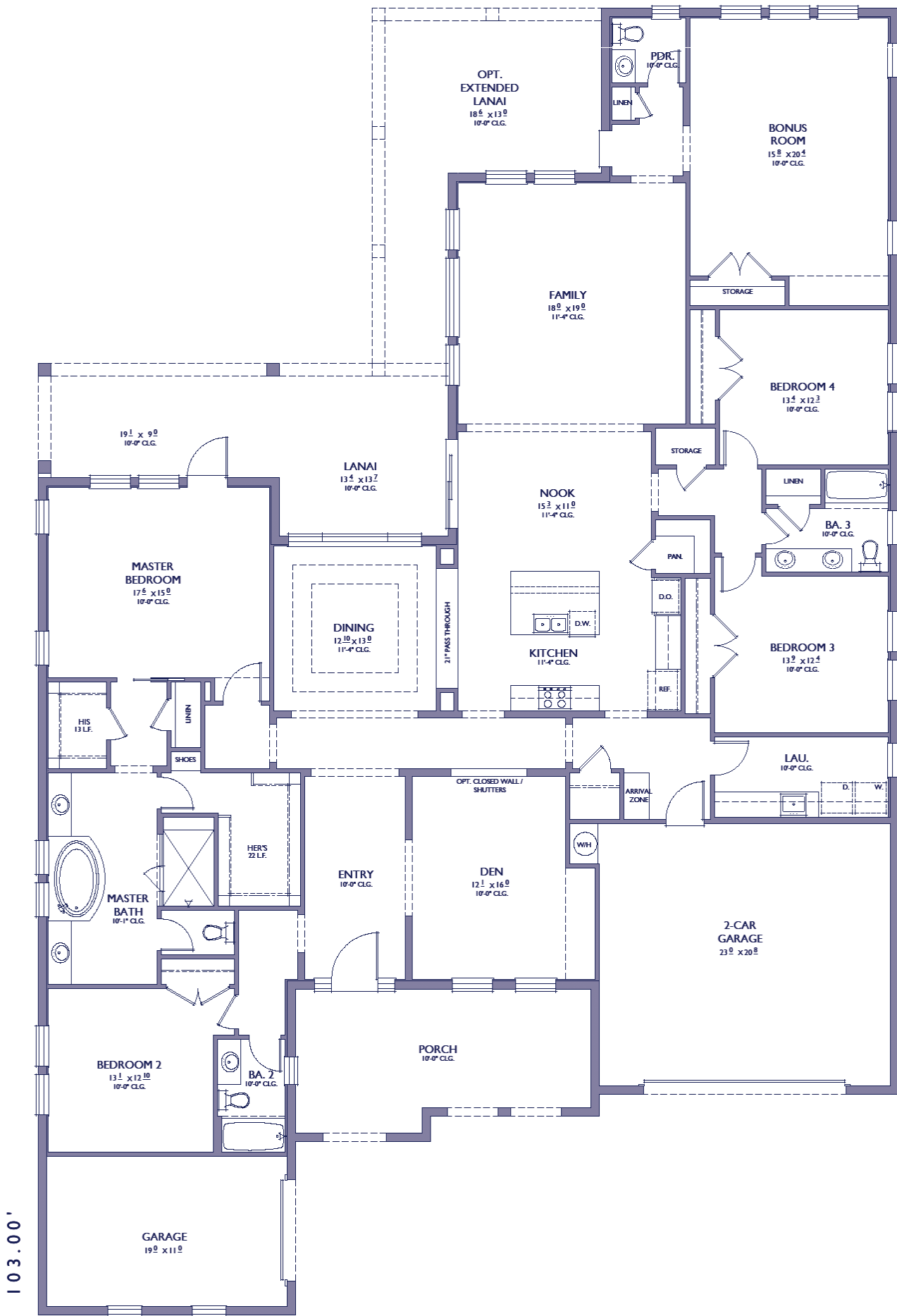
103.00'

68.00'

CAYMAN - GUEST SUITE I + BA. 4 + PDR.

TOTAL LIVING : 3,780 S.F.

LIVING: + 460 SQ. FT.
LANAI: + 330 SQ. FT.



103.00'

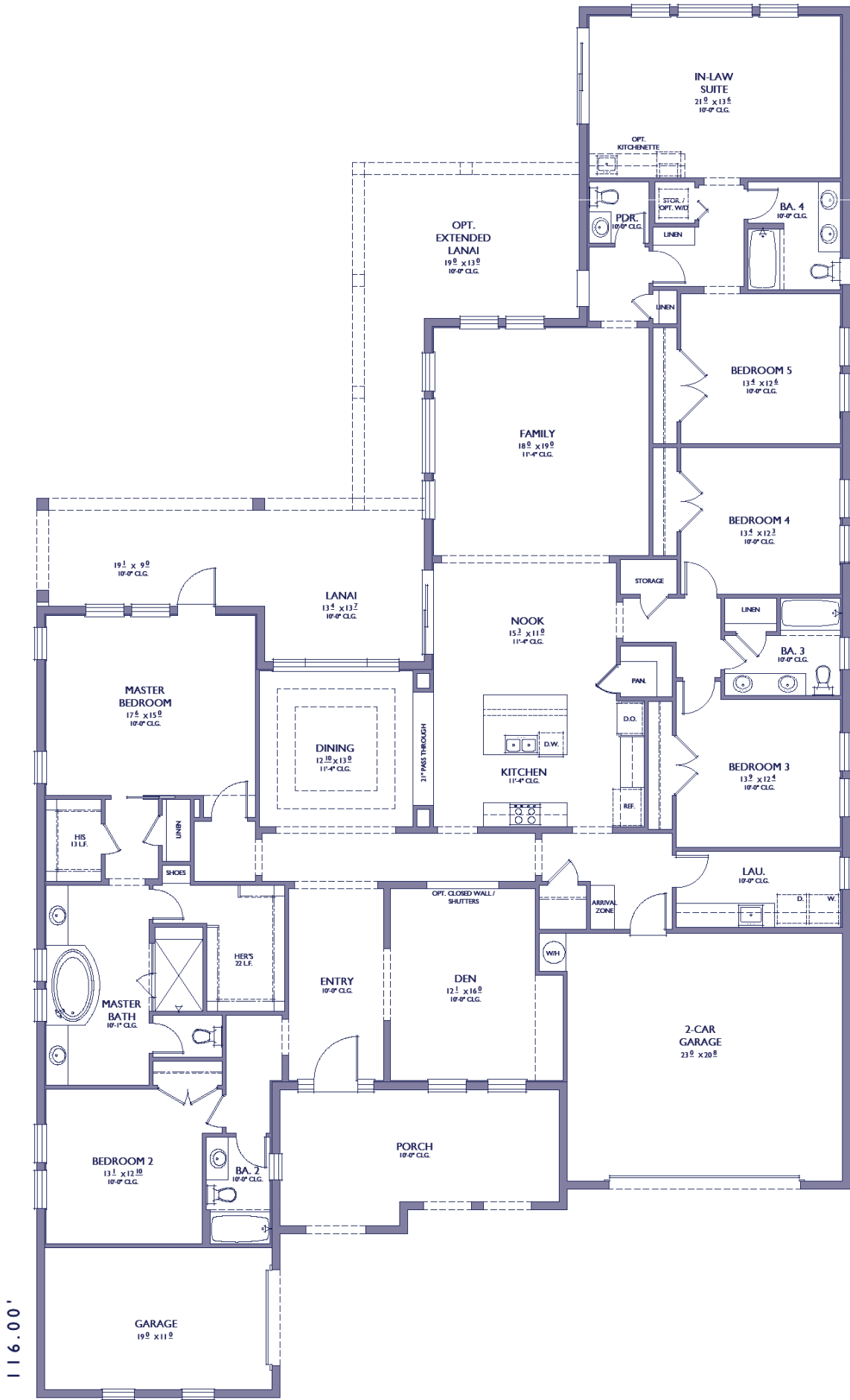
68.00'

CAYMAN - BONUS + PDR.

TOTAL LIVING : 3,780 S.F.

LIVING: + 460 SQ. FT.

LANAI: + 330 SQ. FT.



116.00'

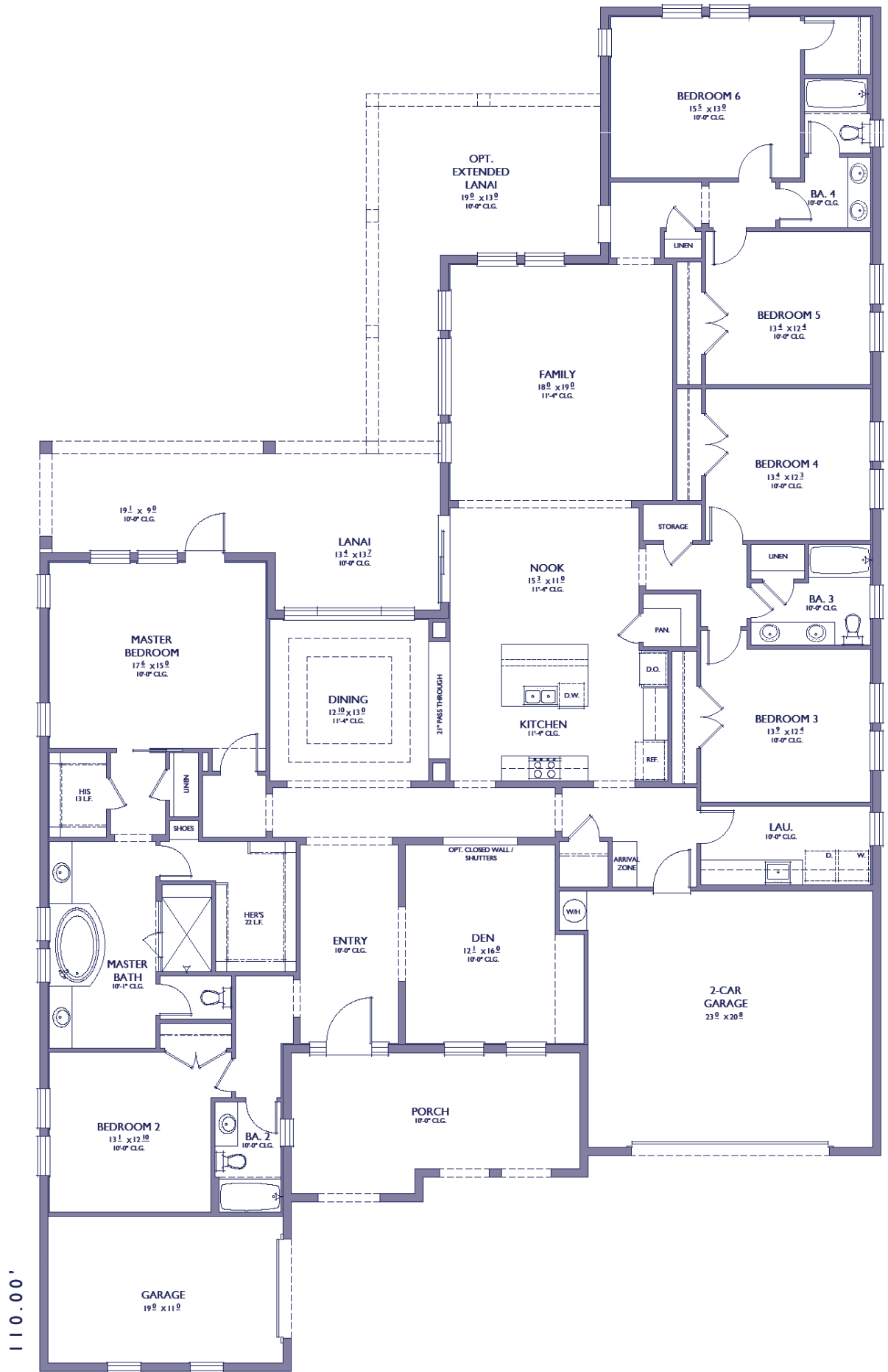
68.00'

CAYMAN - IN-LAW SUITE 2 + BA. 4 + PDR.

TOTAL LIVING : 4,068 S.F.

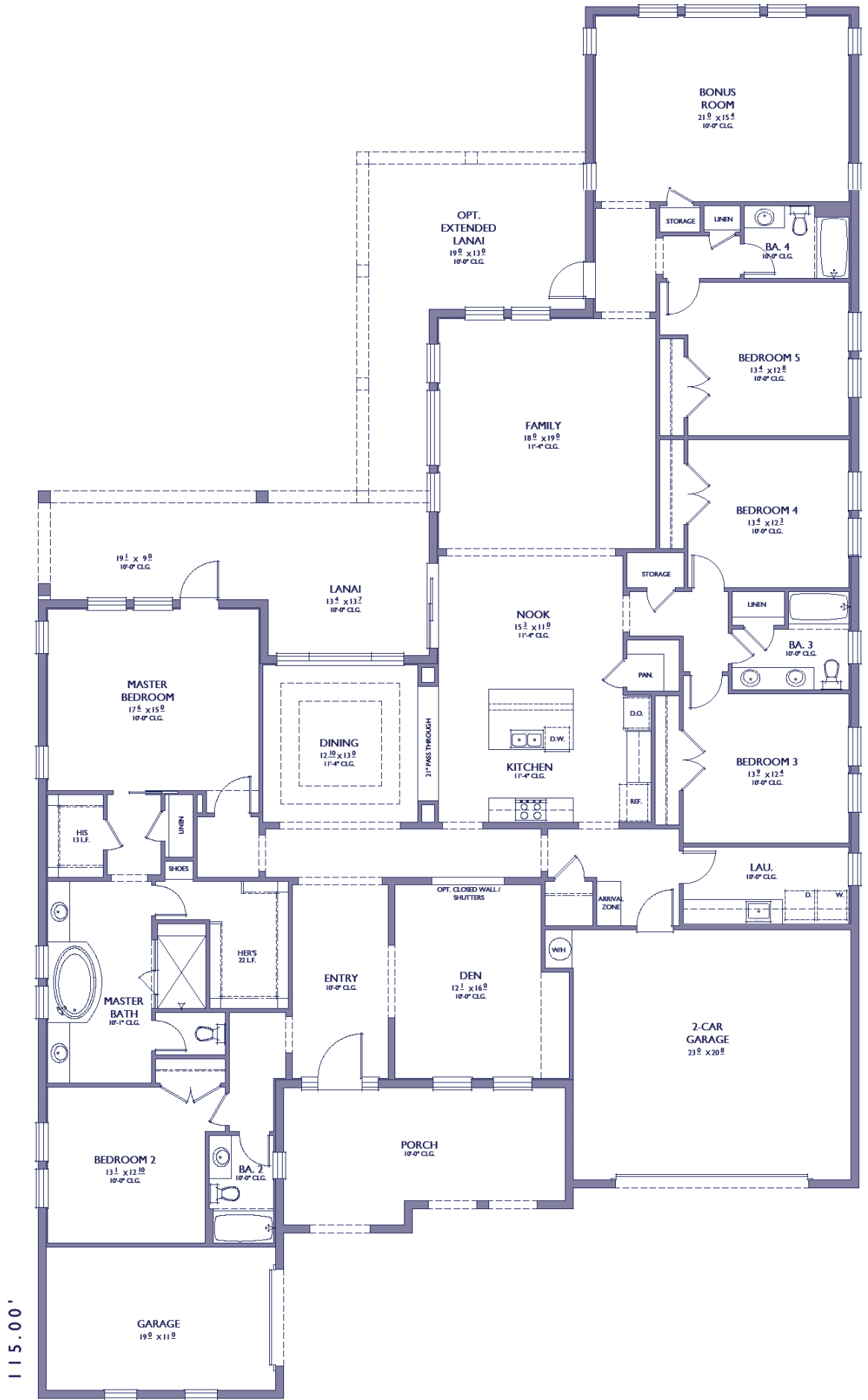
LIVING: + 748 SQ. FT.

LANAI: + 336 SQ. FT.



CAYMAN - BEDROOMS 5 & 6 + BATH 4

TOTAL LIVING : 3,932 S.F.
 LIVING: + 612 SQ. FT.
 LANAI: + 336 SQ. FT.



115.00'

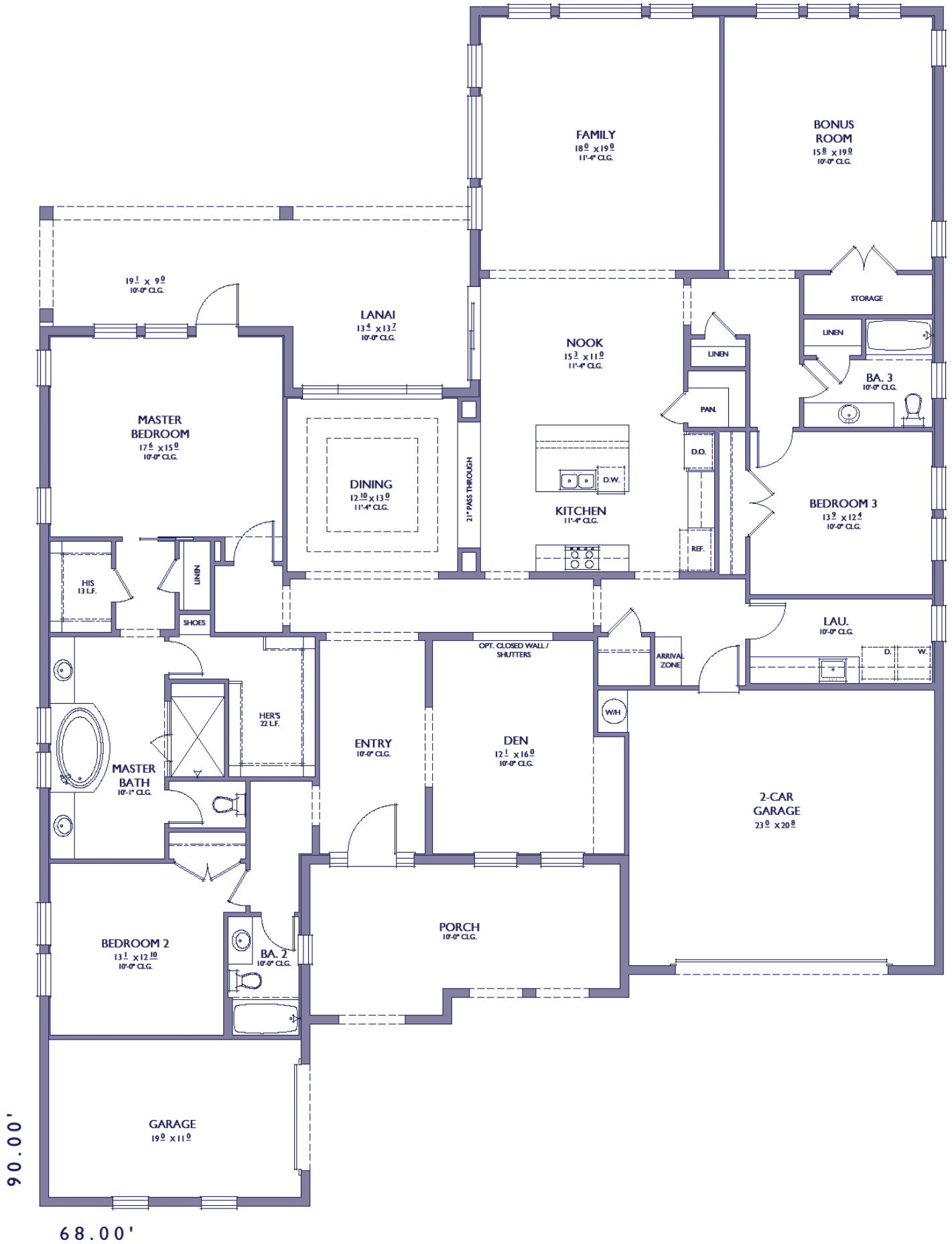
68.00'

CAYMAN - BEDROOMS 5 + BATH 4 + BONUS

TOTAL LIVING : 4,045 S.F.

LIVING: + 725 SQ. FT.

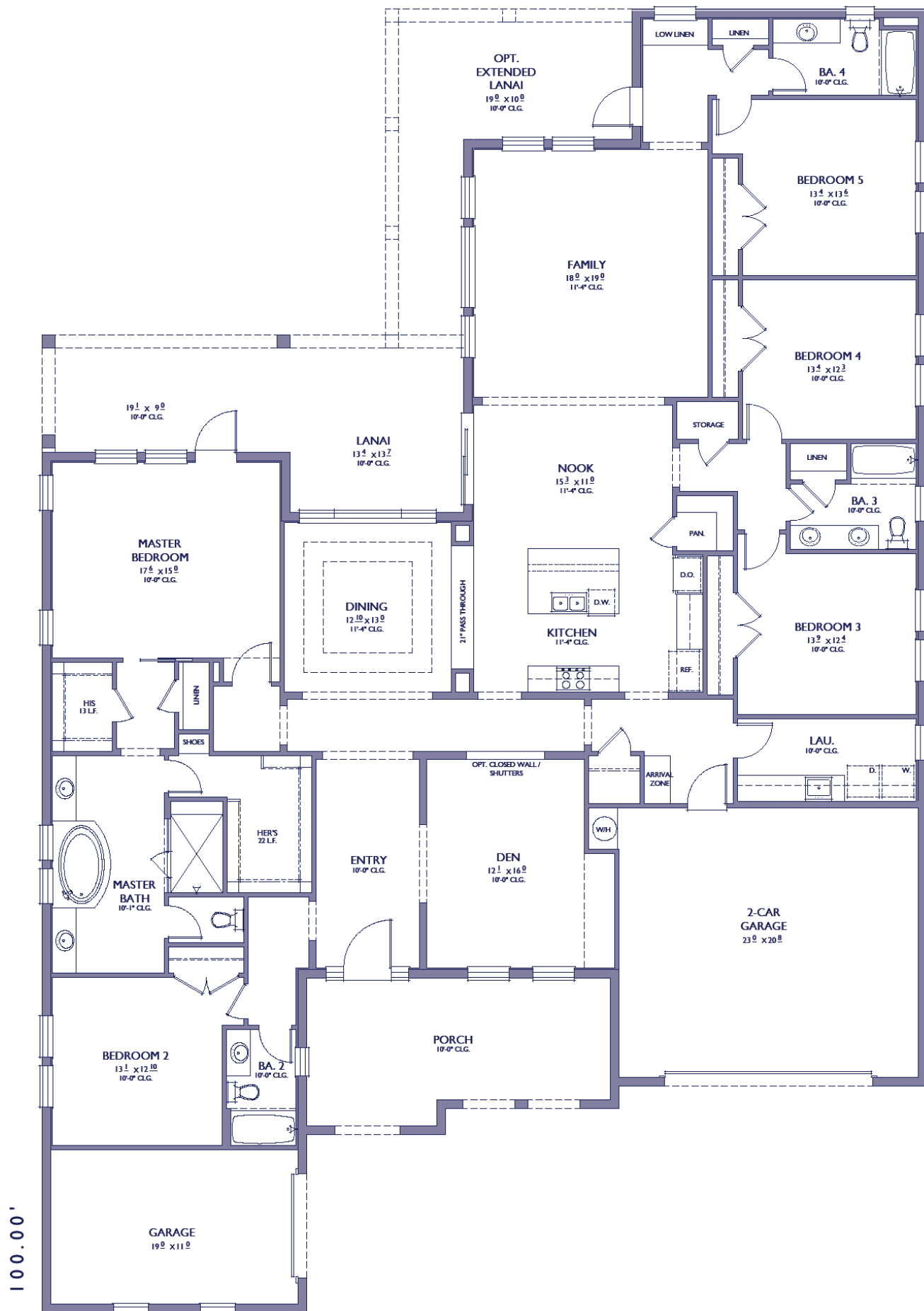
LANAI: + 336 SQ. FT.



CAYMAN - BONUS ROOM IN LIEU OF BED. 4

TOTAL LIVING: 3,479 S.F.

LIVING: +159 SQ. FT.



100.00'

68.00'

CAYMAN - BEDROOMS 5 + BATH 4

TOTAL LIVING : 3,706 S.F.

LIVING: + 386 SQ. FT.

LANAI: + 280 SQ. FT.