

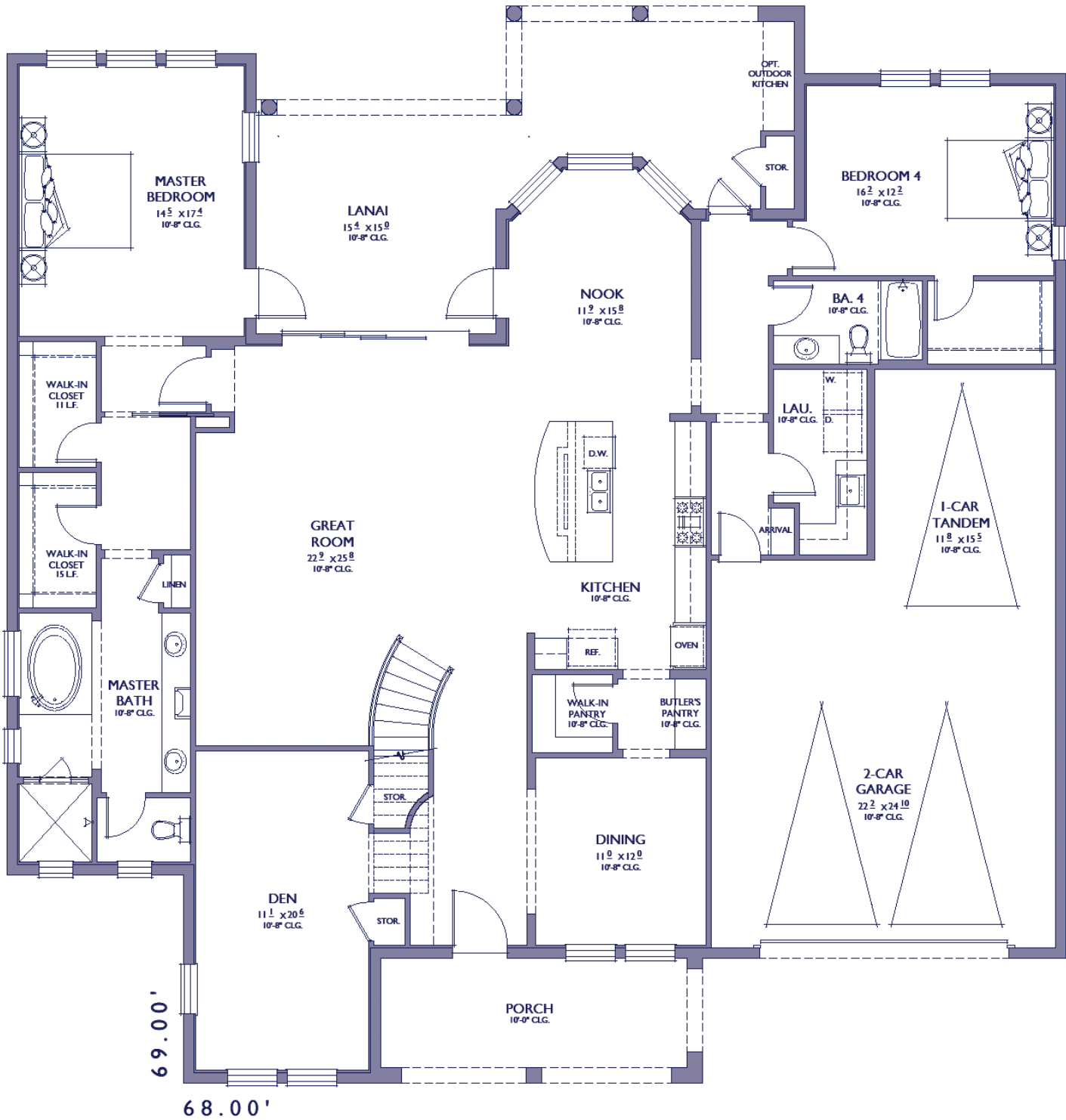
**GULFVIEW**

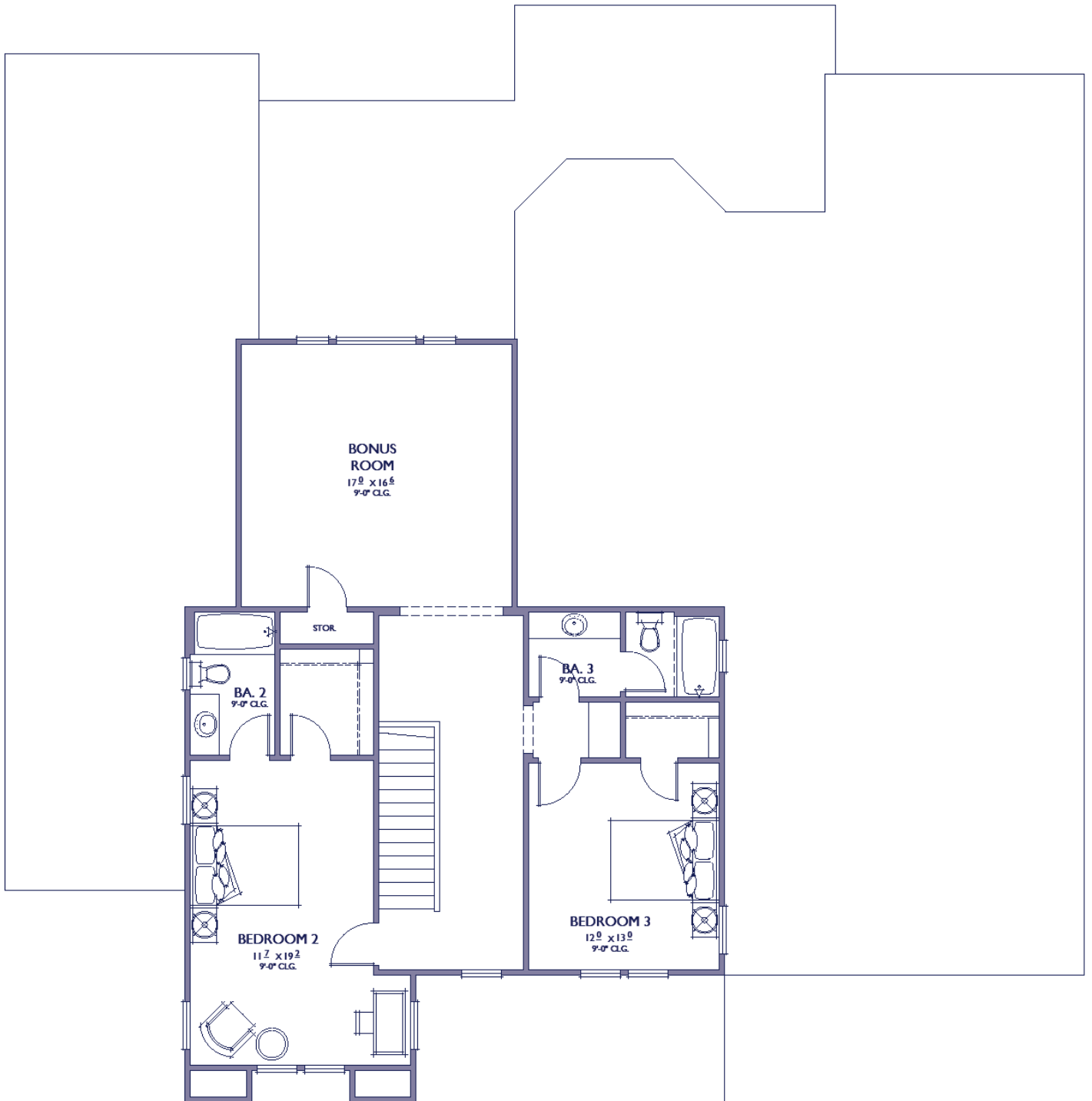
**3,918 SQ. FT.**

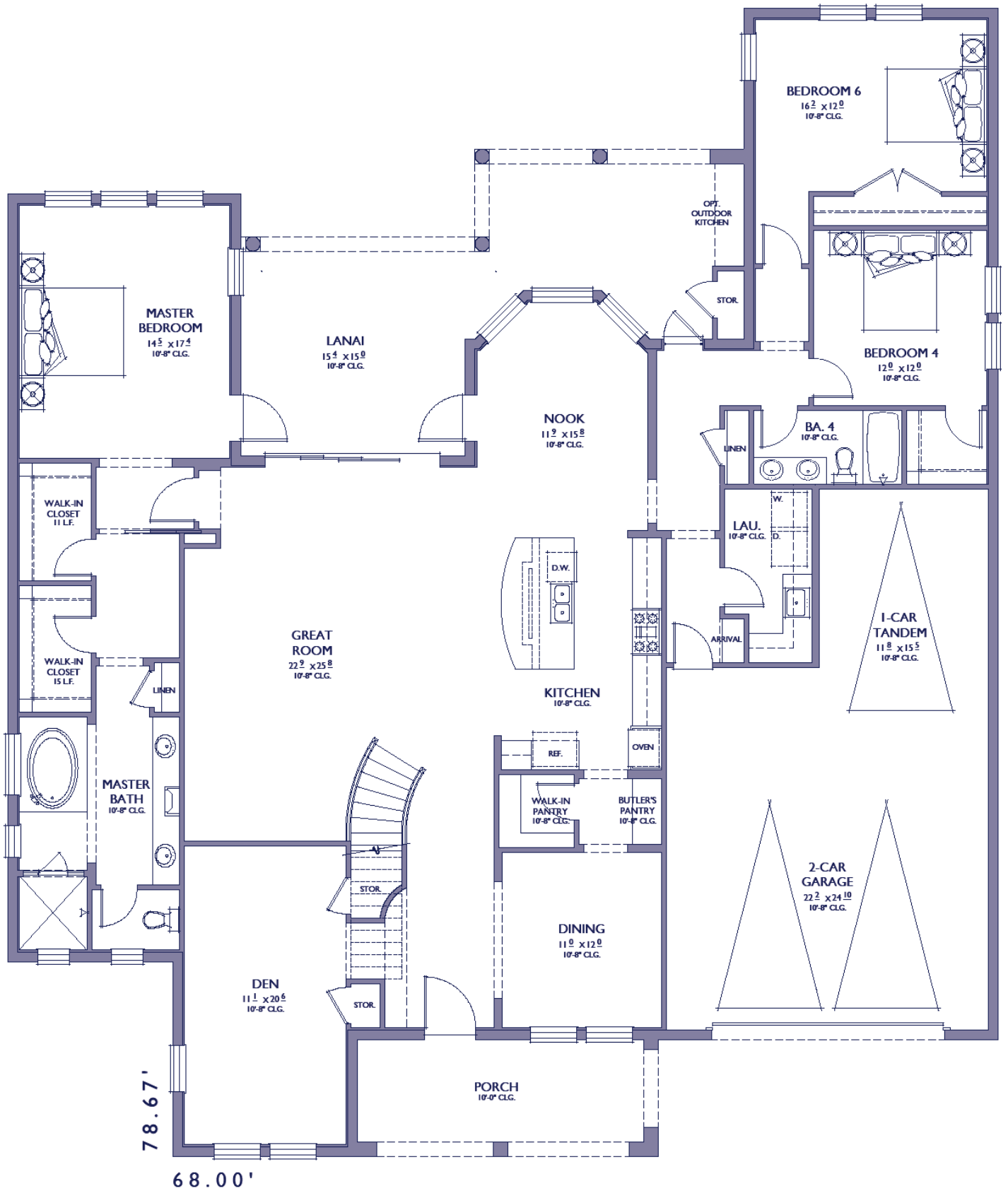
TARGET: 3,750 SQ. FT.  
 4 BEDROOMS / 4 BATHS  
 3 - CAR GARAGE

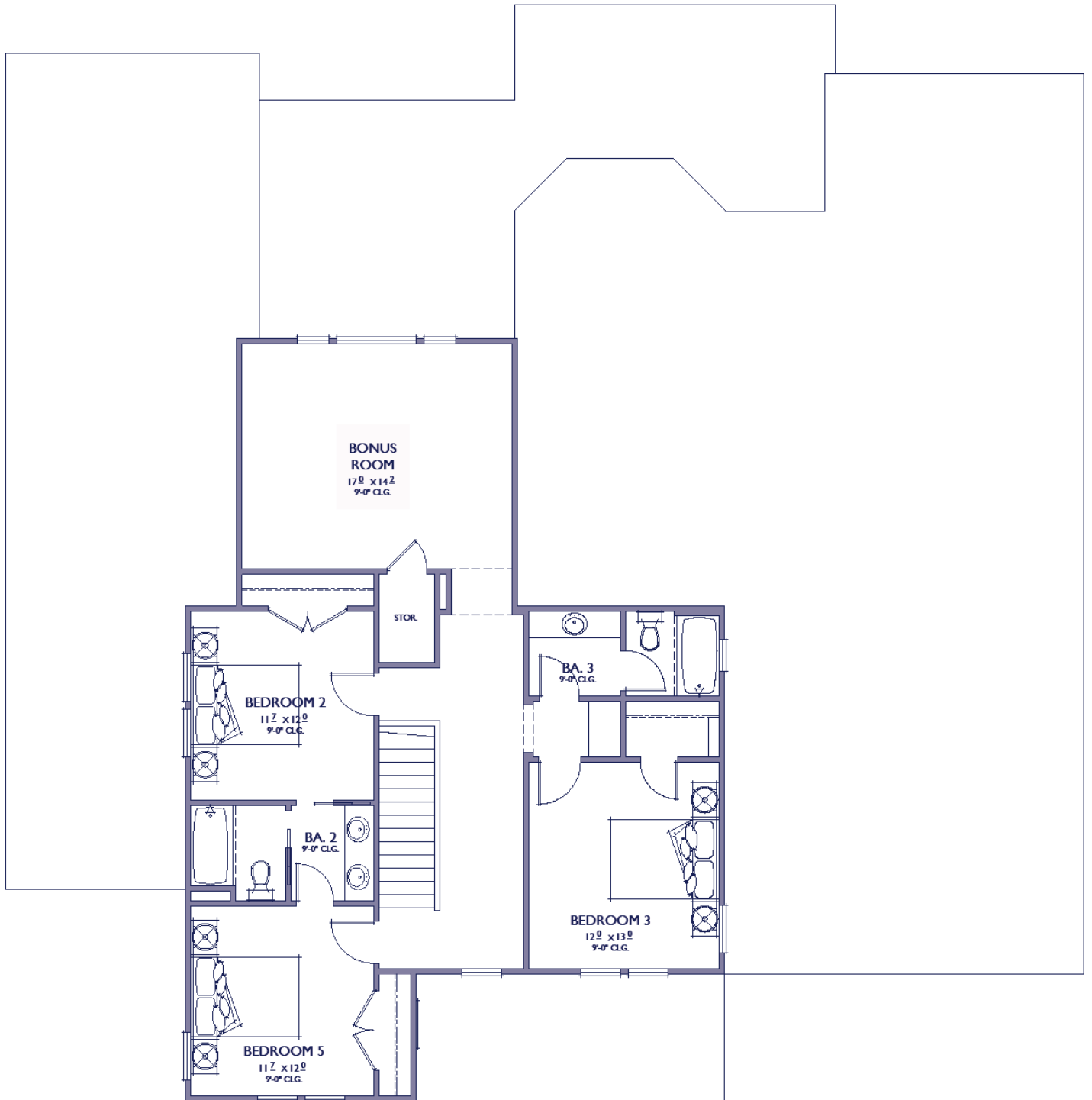
FLOOR AREA TABLE	
1ST FLOOR	2,785 SQ. FT.
2ND FLOOR	1,133 SQ. FT.
TOTAL	3,918 SQ. FT.
3 - CAR GARAGE	731 SQ. FT.
LANAI	454 SQ. FT.
PORCH	165 SQ. FT.

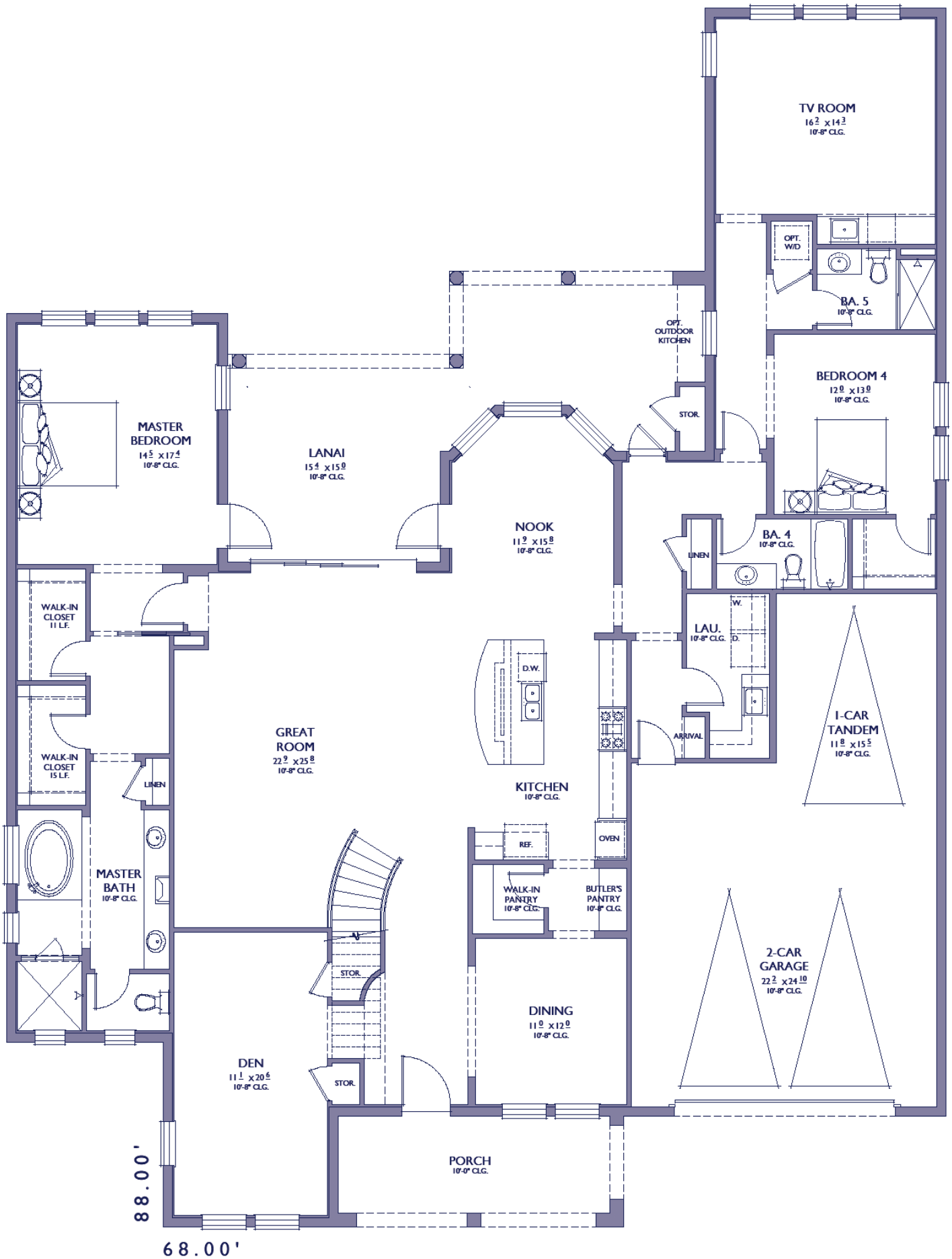
NOTE: SQUARE FOOTAGE MAY VARY DUE TO METHOD OF CALCULATION

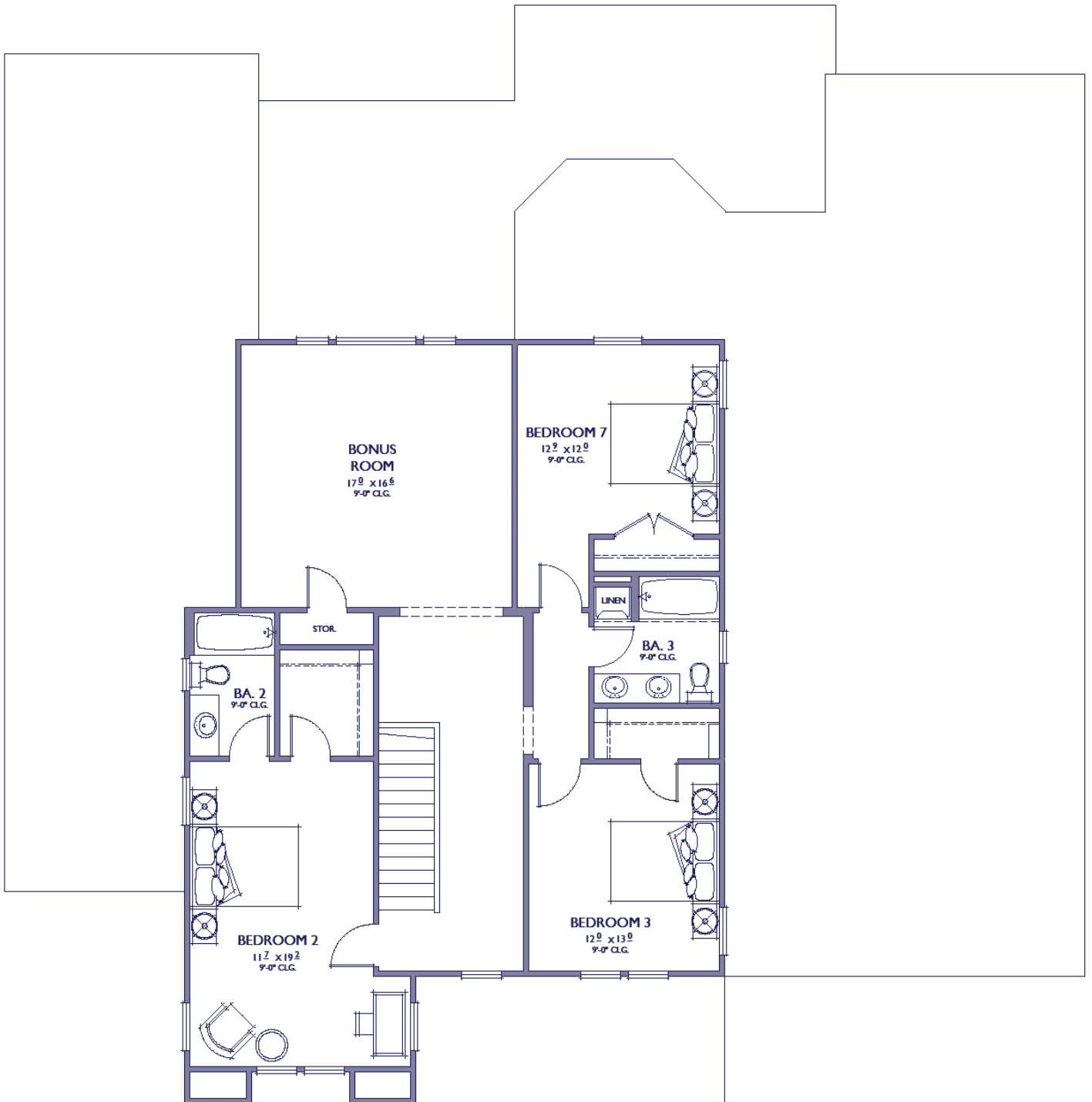


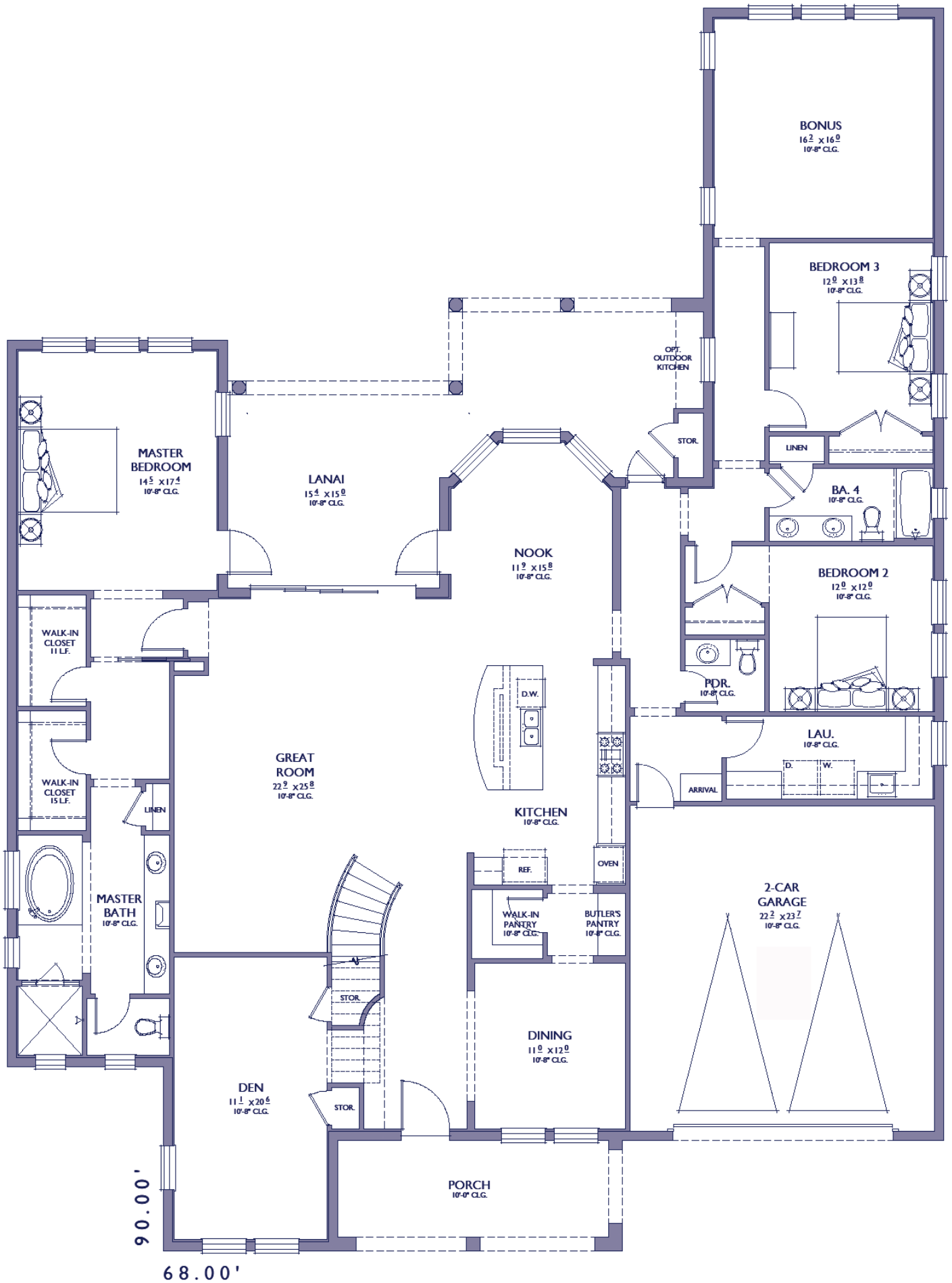






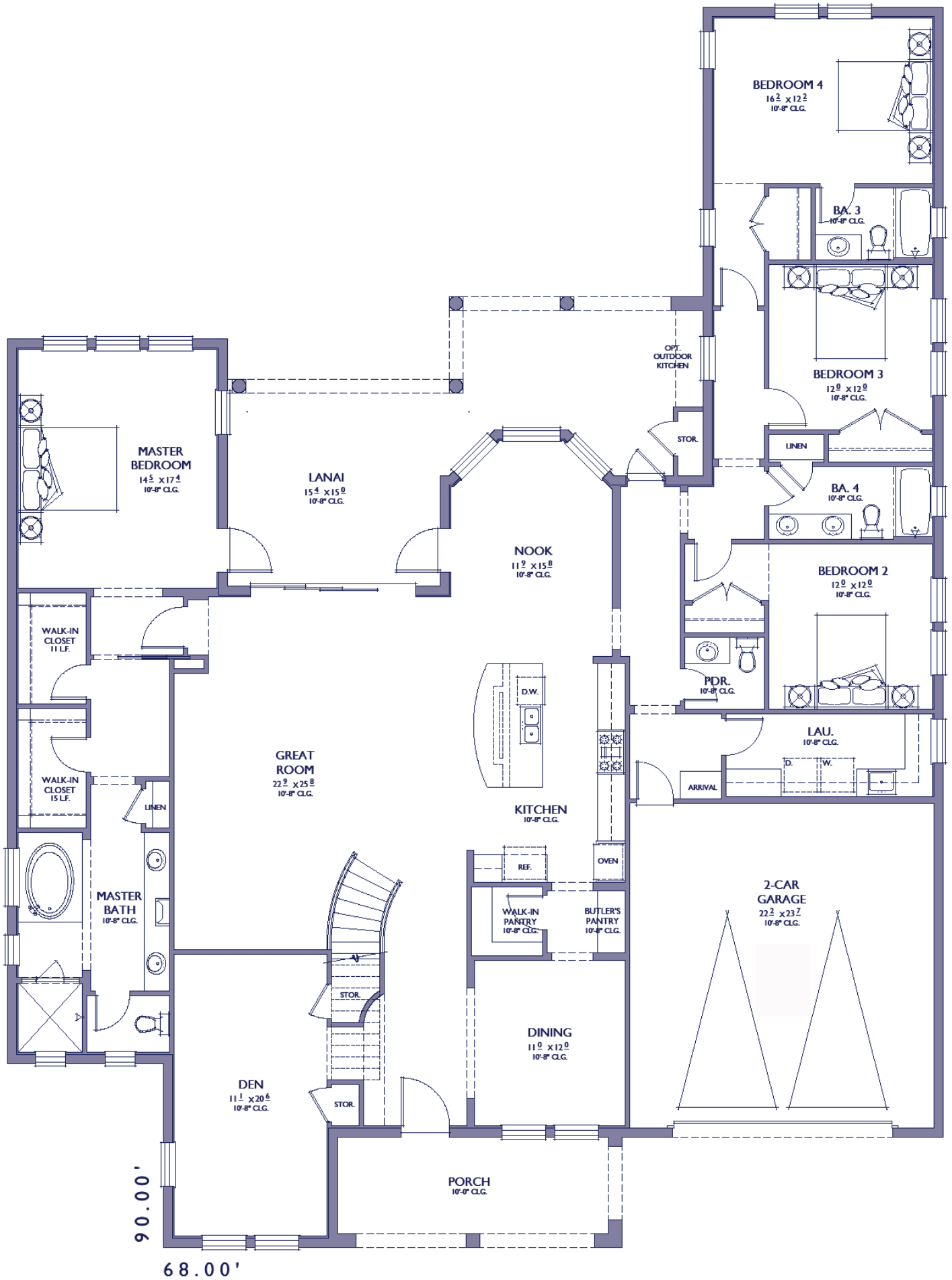






GULFVIEW - 3 BEDROOMS 2.5 BATHS + BONUS DOWN

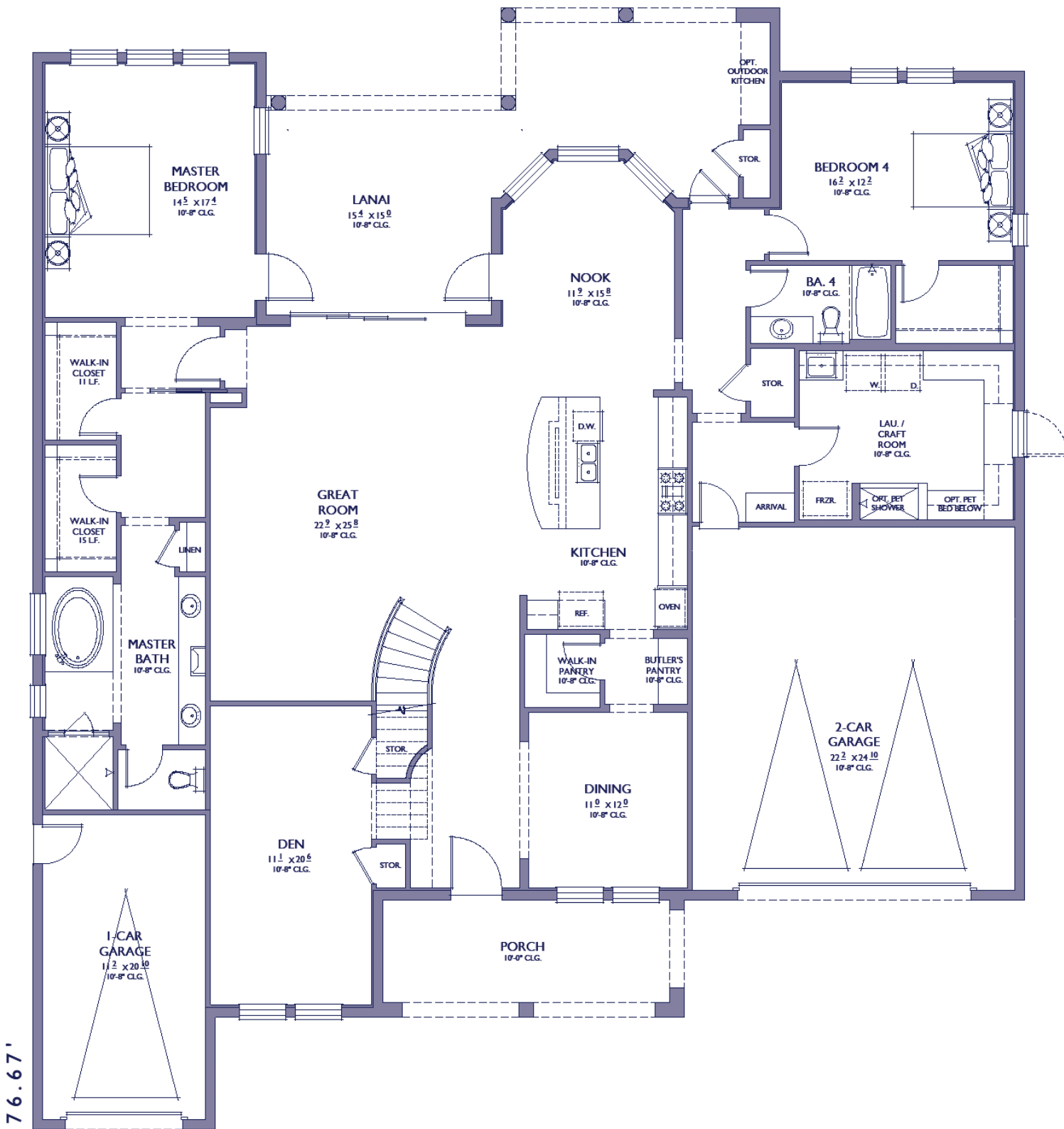
+626 SQ. FT. (TOTAL 4,544 SQ. FT.)



GULFVIEW - 4 BEDROOMS 3.5 BATHS DOWN

+626 SQ. FT. (TOTAL 4,544 SQ. FT.)





76.67'

68.00'

GULFVIEW - OPT. GARAGE / CRAFT ROOM

+150 SQ. FT. (TOTAL 4,068 SQ. FT.)